

Forest Grove Park – Master Plan

Park Board & Council

June 4th 2012

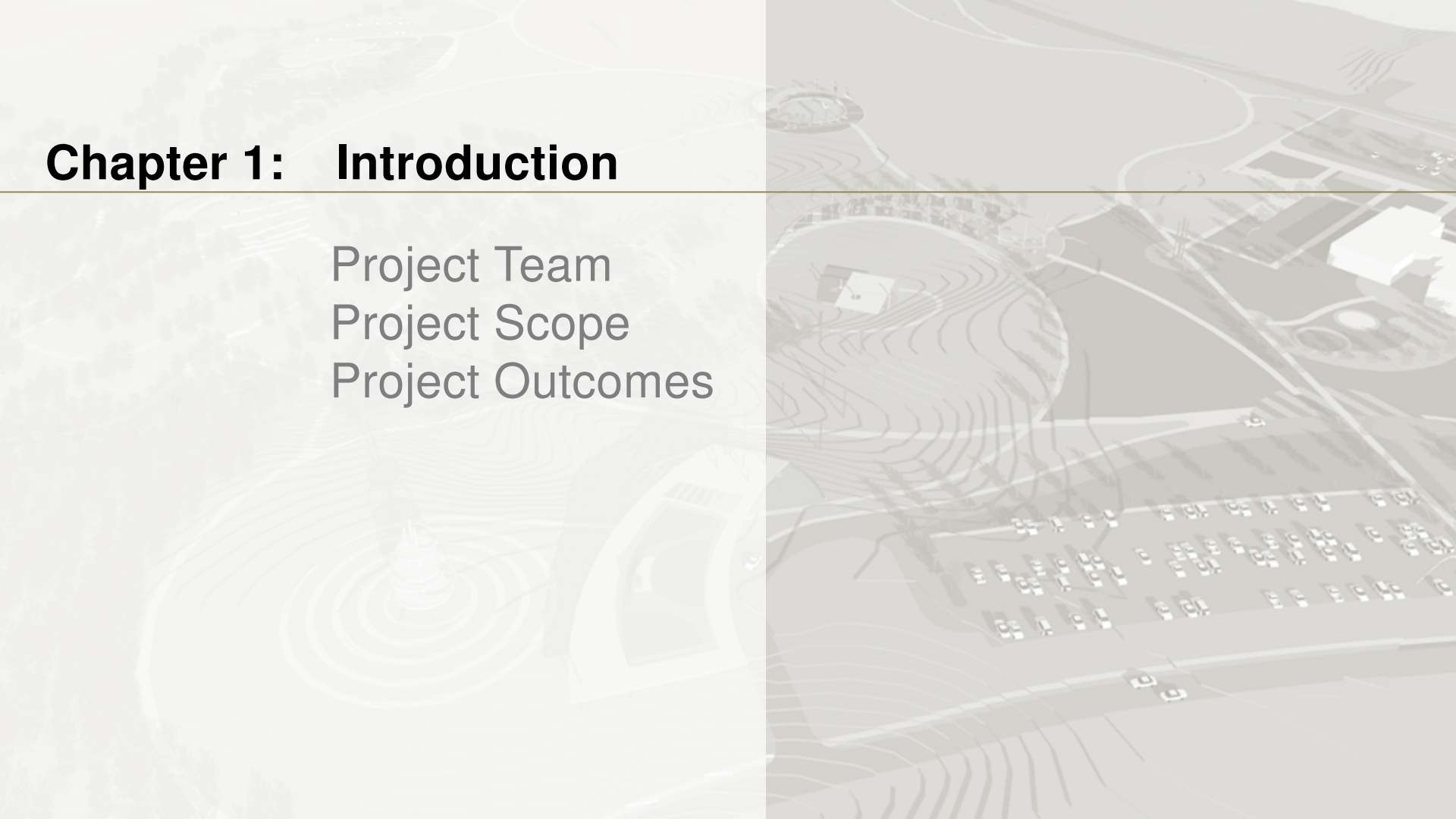


- Chapter 1:** **Introduction**
 - Project Team
- Chapter 2:** **Discovery**
 - Inventory
 - Analysis
 - Public Input
 - Vision Statement
 - Program
- Chapter 3:** **Plan Alternatives**
- Chapter 4:** **Final Master Plan (draft)**
 - Park Facilities
- Chapter 5:** **Implementation**
 - Partners
 - Priorities
 - Project Costs



Chapter 1: Introduction

Project Team
Project Scope
Project Outcomes



Steering Committee

project participants

Forest Grove Park – Master Plan

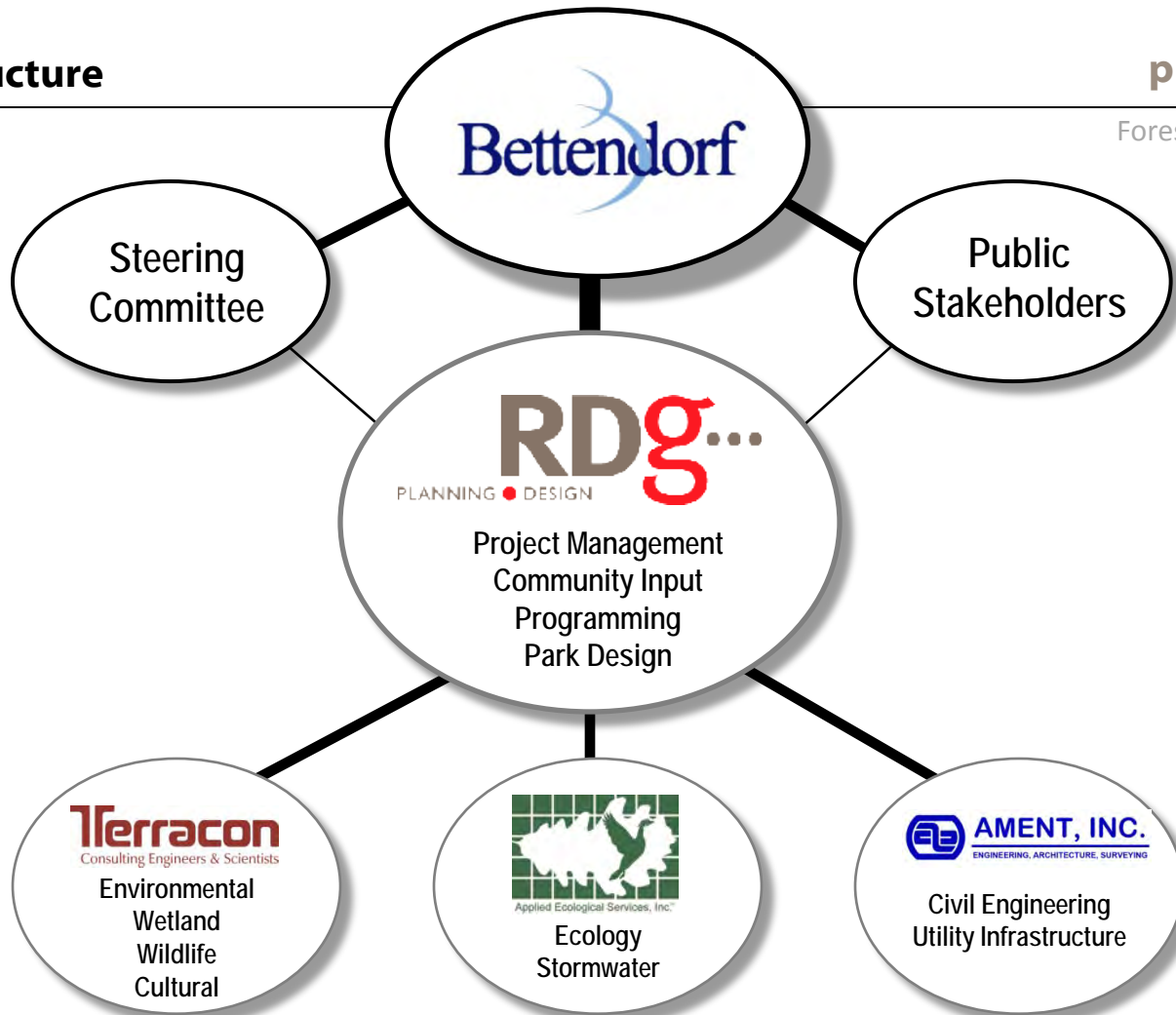
Name	Organization/Representation	Phone	Email
Steering Committee			
Gary Kamp	Park Board Chair	563.359.3019	gary.kamp@treiberconstruction.com
Lisa Brown	City Council Member	563.441.4016	lbrown@bettendorf.org
Roy Wennlund	Planning & Zoning Commissioner	563.262.4283	rwennlund@bandaq.com
Matt Mooney	Friends of Bettendorf Parks Foundation	563.359.8857	mattmooney52@gmail.com
Tim Huey	Scott County Representative	563.326.8643	thuey@scottcountyiowa.com
Steve Gustafson	Trees Are Us Representative	563.355.1378	geology98@yahoo.com
Jeff Lanum	Quad Cities Chamber Representative	563.355.0227	jeff@russellcompanies.net
Theron Schulte	Bettendorf Schools Representative	563.359.3681	tschutte@bettendorf.k12.ia.us
Jim Spellhaug	Pleasant Valley Schools Representative	563.332.5550	spellhaugjim@pleasval.k12.ia.us
Adam Sampson	YMCA	563.359.9622	asampson@scottcountyfamilyy.org
Steve Grimes	Director of Parks & Recreation	563.344.4115	sgrimes@bettendorf.org
Stu Smith	Parks Maintenance Manager	563.344.4105	ssmith@bettendorf.org
John Soenksen	Community Development Department Staff	563.344.4083	jsoenksen@bettendorf.org
Steve Van Dyke	Director of Economic Development	563.344.4060	svandyke@bettendorf.org



Project Structure

project participants

Forest Grove Park – Master Plan



Consultant Team

project participants

Forest Grove Park – Master Plan



PLANNING • DESIGN



Scott Crawford
ASLA, LEEDAP
Project Director



Mike Bell
ASLA
Project Manager



Ryan Peterson
ASLA
Landscape Architect



Alli Moerman
B.A.
Project Coordinator



John Brimeyer
P.E.
Environmental Engineer



Applied Ecological Services, Inc.



Randy Vogel
Principal Ecologist



Mike Dryden
P.E.
Civil Engineer





AMPHITHEATER AND SUMMER PLAZA DURING AN EVENT

A Case for a Better Way of Community Building

The 2005 UN World Urbanization Prospects report projected that the urban growth is likely to rise to 60% (4.9 billion) by 2030. Healthy Urbanism is a place we could live, work, learn and play and is a powerful case for the types of patterns we can promote:

- Increasing sustainability through appropriate density.
- Integrating transportation and land use.
- Creating sustainable neighborhoods, including housing, car-free areas, locally-owned stores, walkable neighborhoods, and universal accessibility.
- The health and environmental benefits of linking humans to nature, including walk-to open spaces, neighborhood stormwater systems and waste-treatment, and food production.
- High performance buildings and energy systems.

A HEALTHY WAY OF LIVING

"Designing Healthy Communities." - looks at the impact our built environment has on key public health indices - obesity, diabetes, heart disease, asthma, cancer and depression. Dr. Jackson connects bad community design with burgeoning health costs, then analyzes and illustrates what citizens are doing about this urgent crisis by looking upstream for innovative solutions.



WINTER PLAZA



SAVANNA STUDIO



PRAIRIE TOWER & COMMUNITY BUILDING



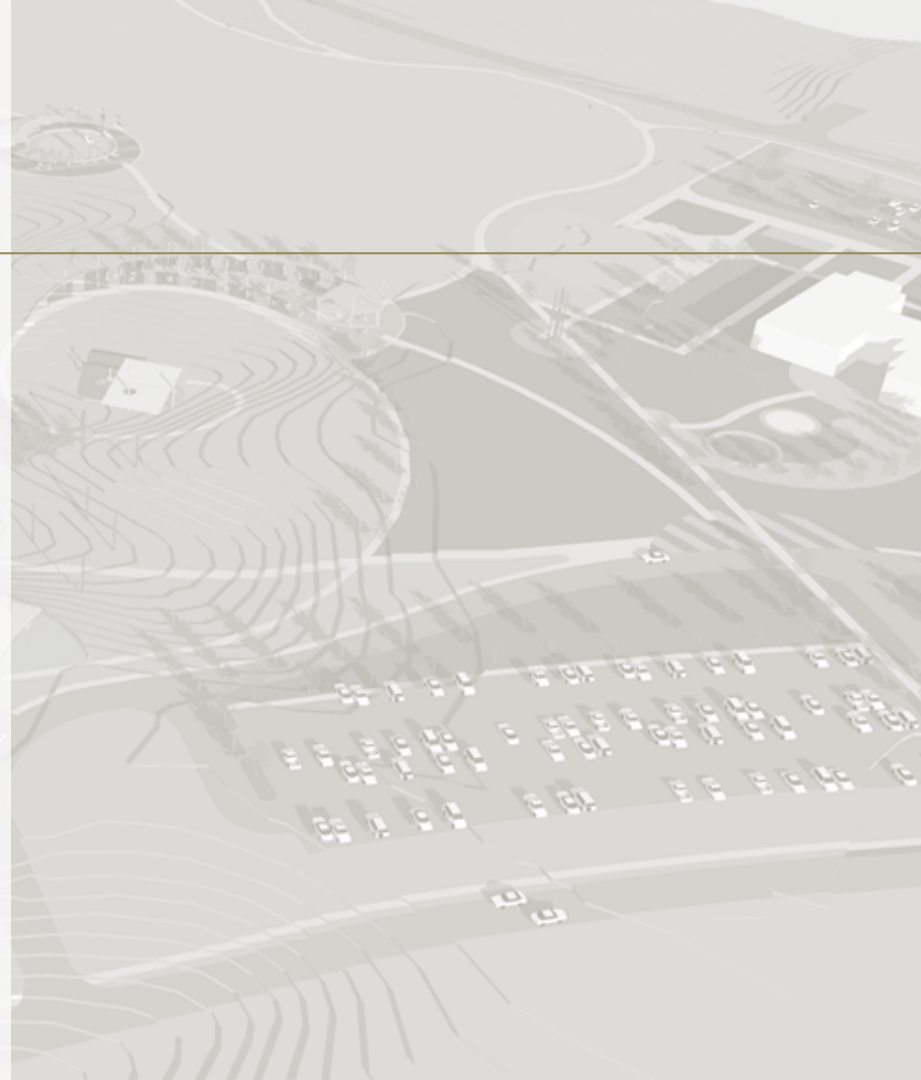
GREAT LAWN

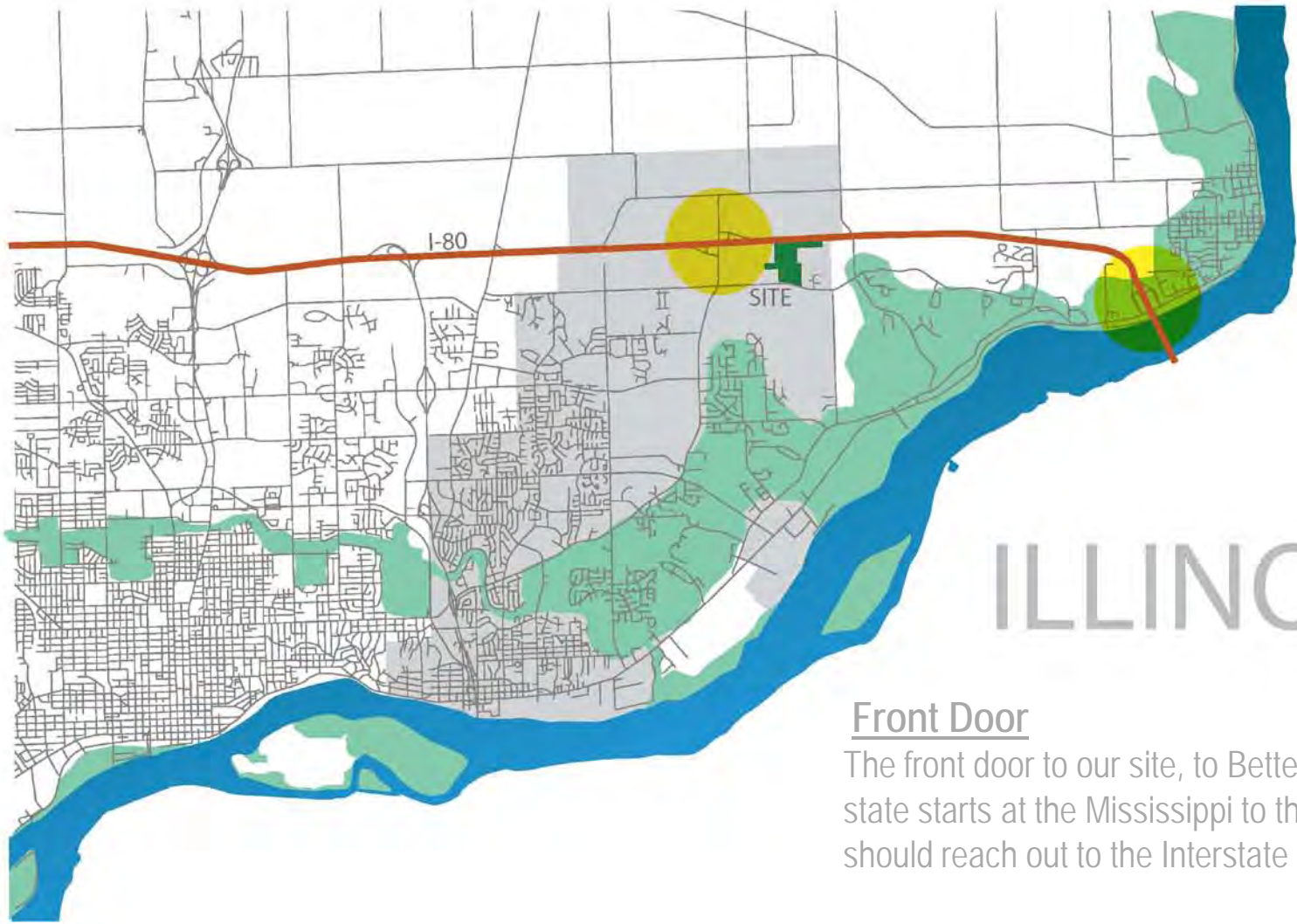


SPENCER CREEK RESTORATION

Chapter 2: **Discovery**

Inventory
Analysis
Public Input
Vision Statement
Program

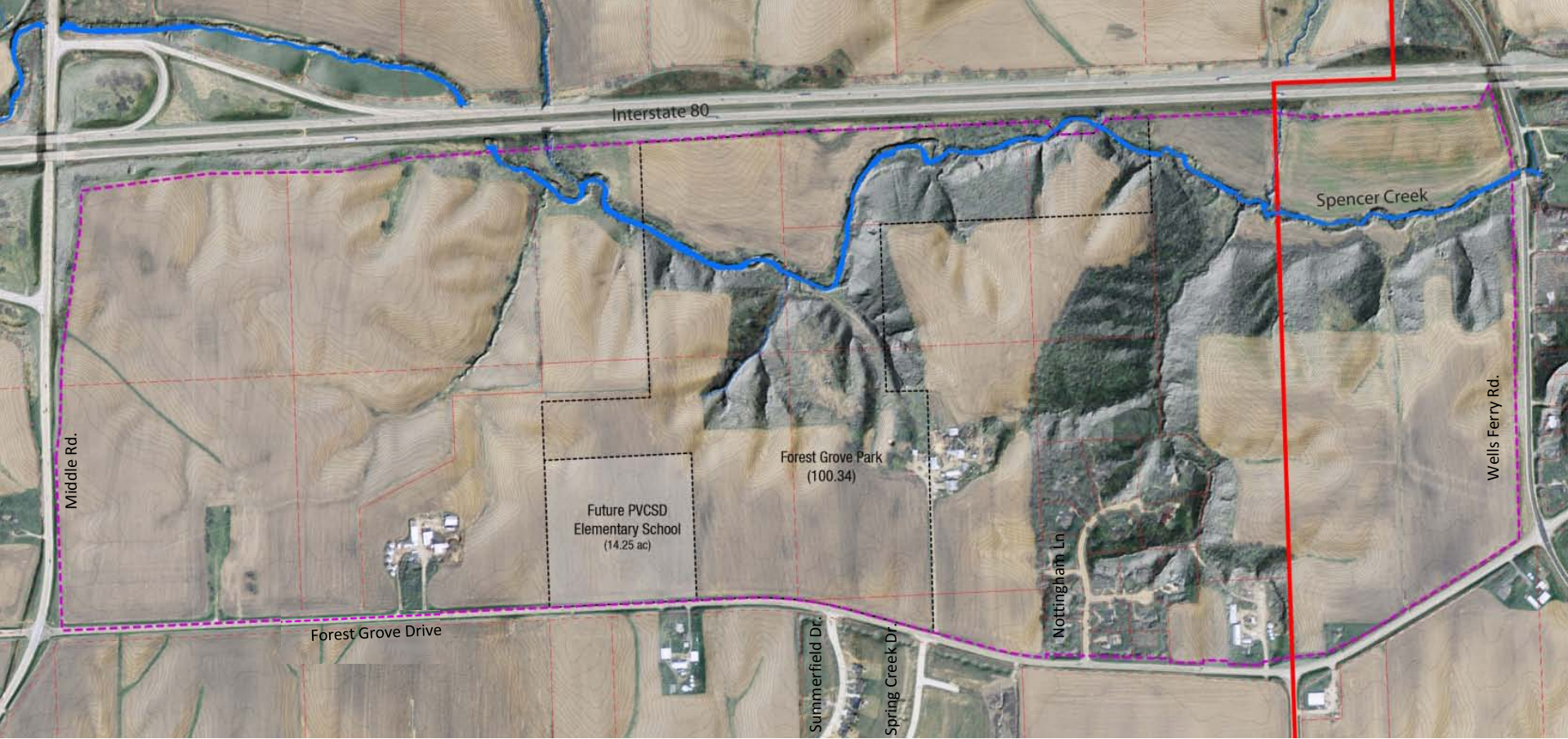




ILLINOIS

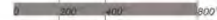
Front Door

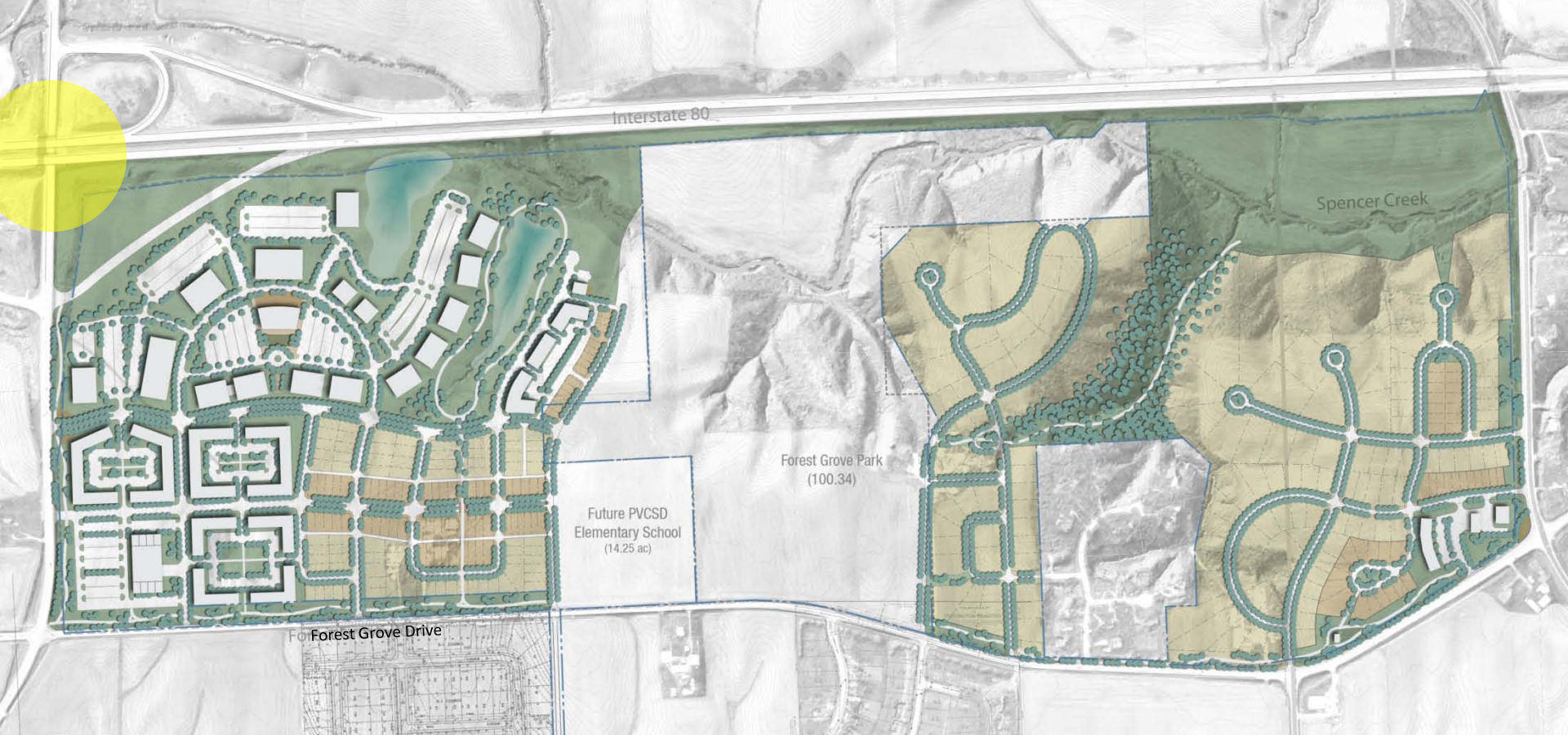
The front door to our site, to Bettendorf and to the state starts at the Mississippi to the east. This project should reach out to the Interstate in a positive way.



Legend

-  Park Boundary
-  Parcel Boundary
-  Land Use Boundary
-  City Limits





Forest Grove

a place to live, work and play

City of Bettendorf
February 21, 2012

LAND USE CONCEPT PLAN



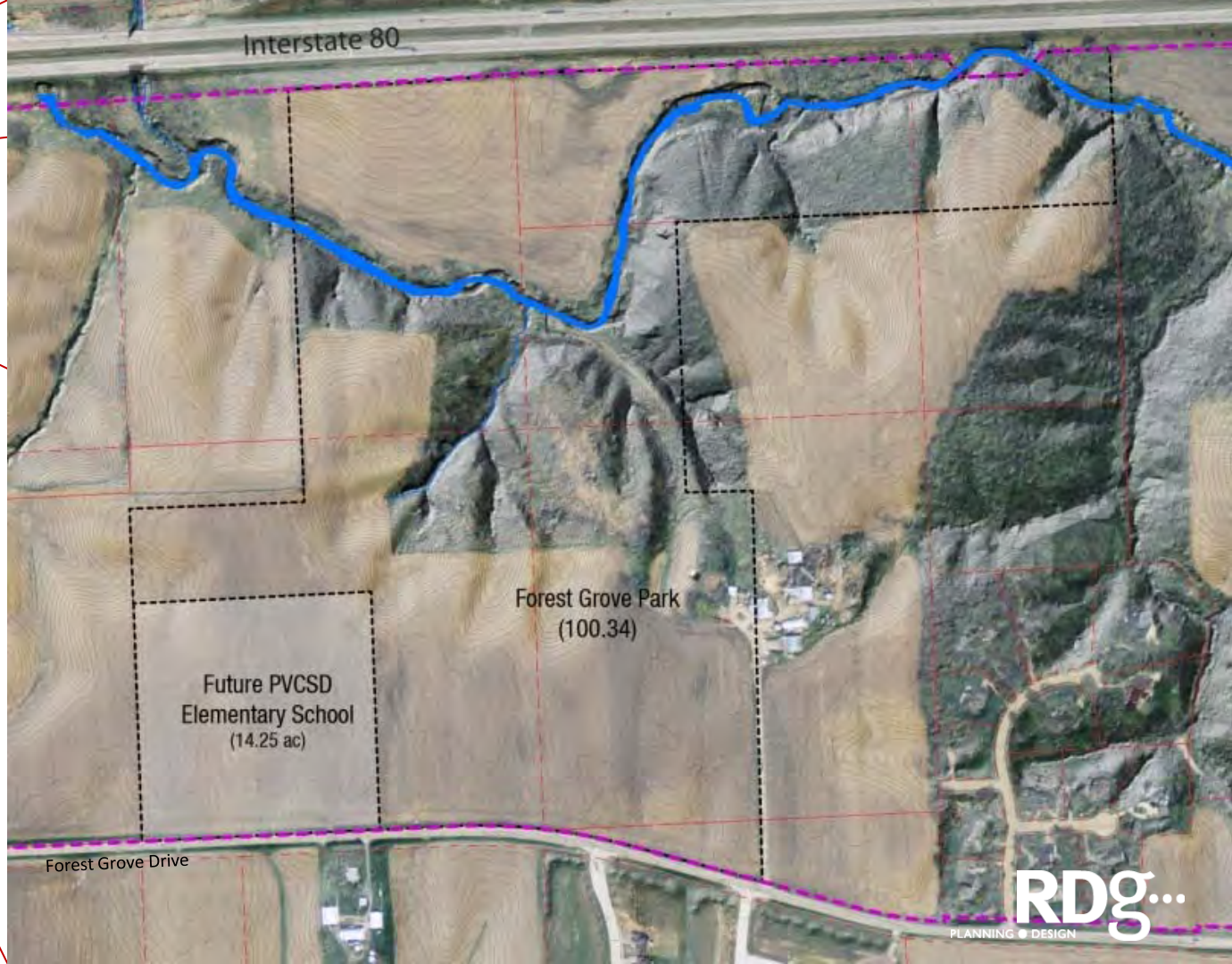
RDg
PLANNING • DESIGN





TOWNCREST

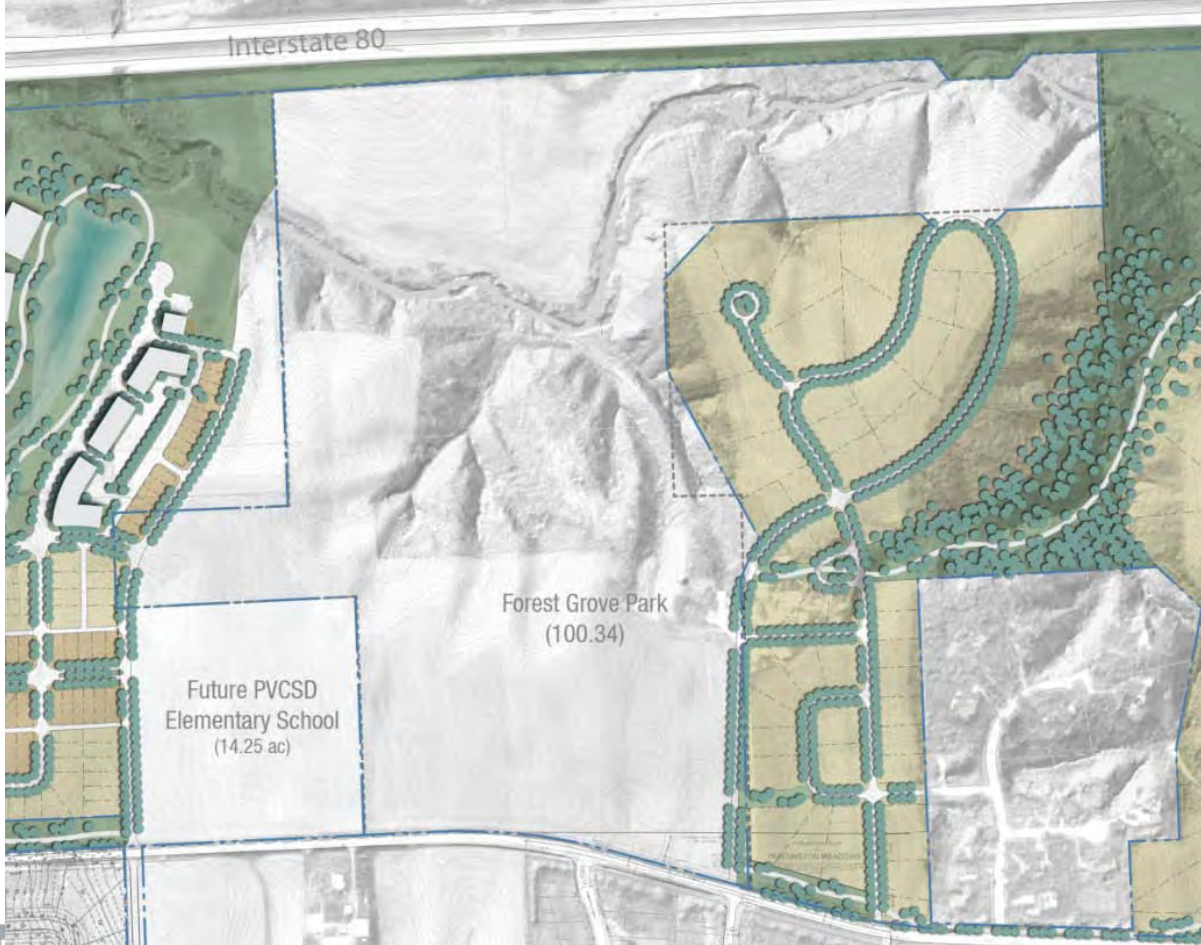
...ing UP



Legend

- Park Boundary
- Parcel Boundary
- Land Use Boundary
- City Limits

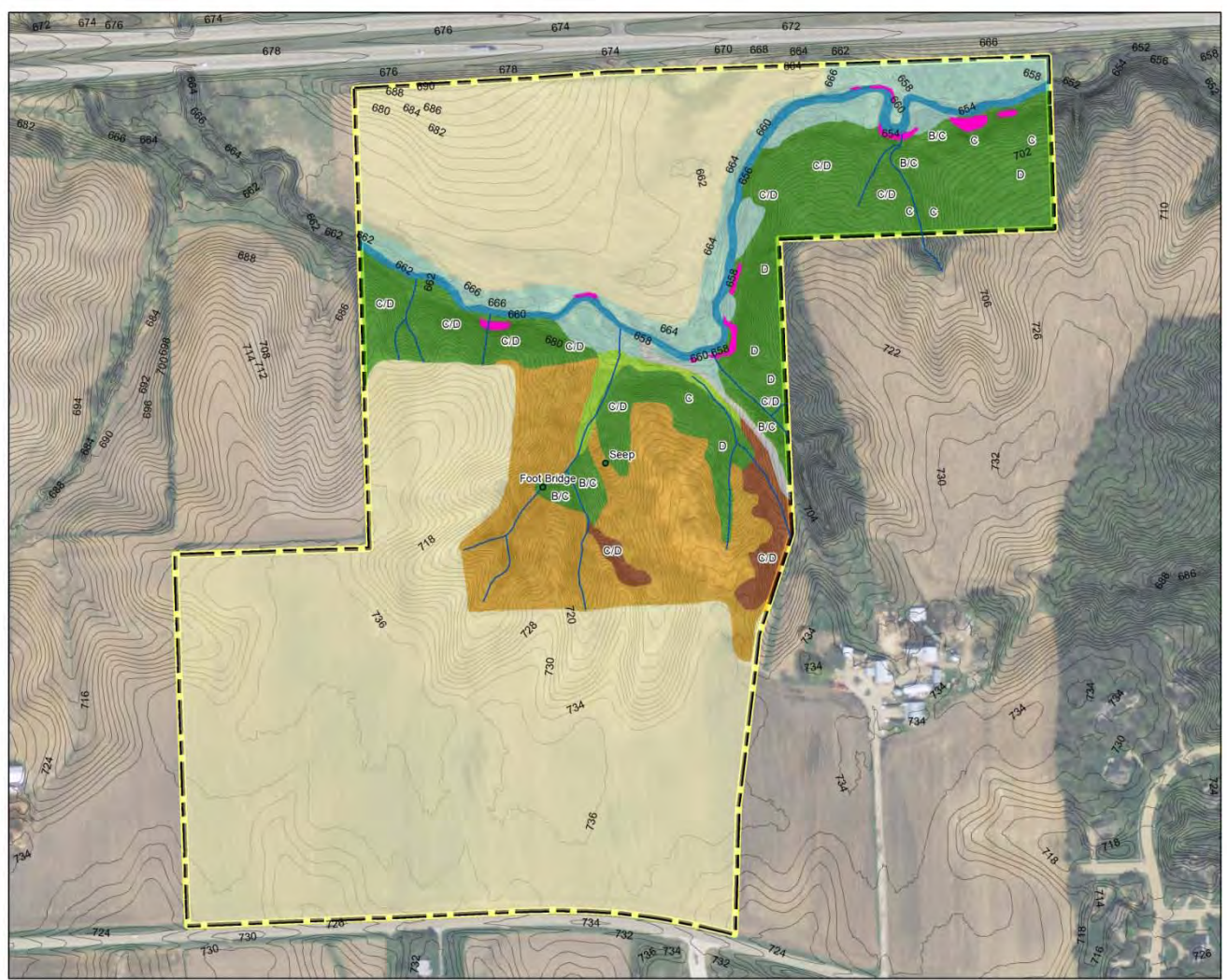




Forest Grove

a place to live, work and play





Forest Grove Park

Figure 1 Existing Land Cover

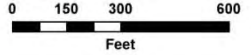
-  Site Boundary
-  Drainageway
-  Streambank Erosion
- Land Cover:
 -  Agricultural Field
 -  Grassed Drive
 -  Basswood - Bur Oak Forest
 -  Central Bur Oak Openings
 -  Sparsely Wooded Pasture
 -  Floodplain Woodland
 -  Degraded Wetland
 -  Creek

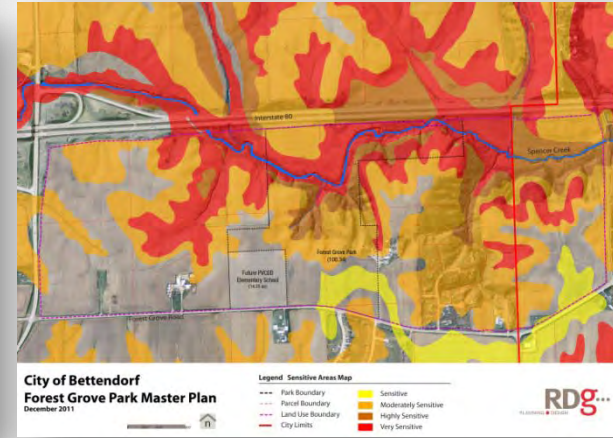
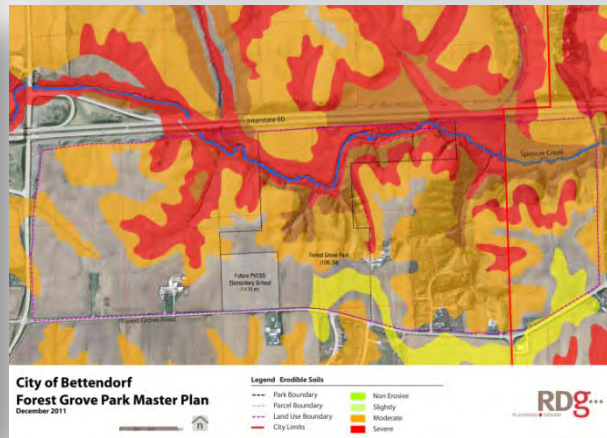
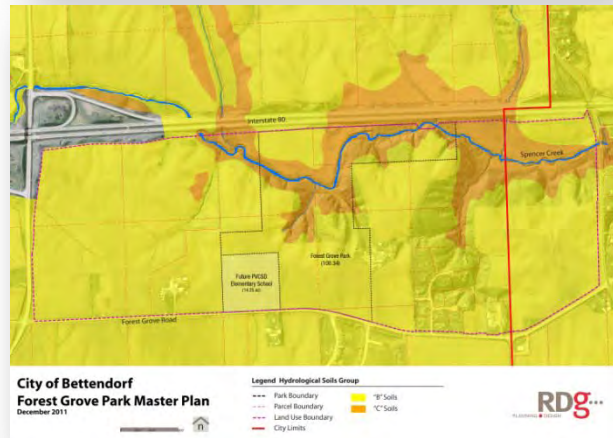
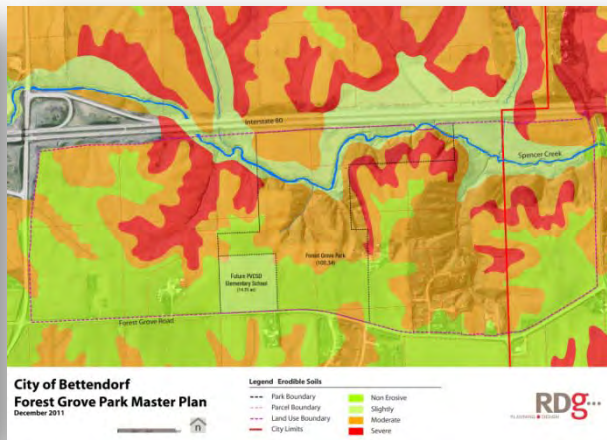
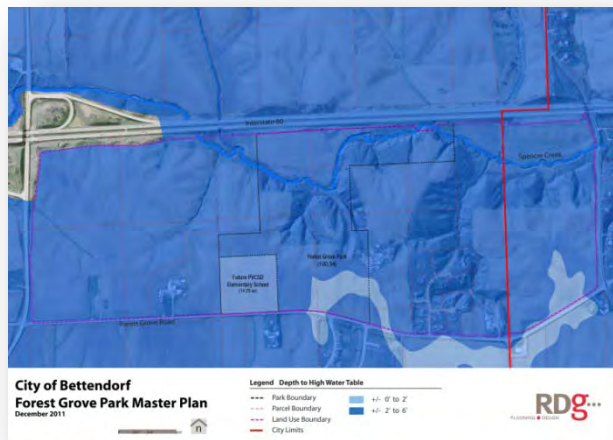
DRAFT

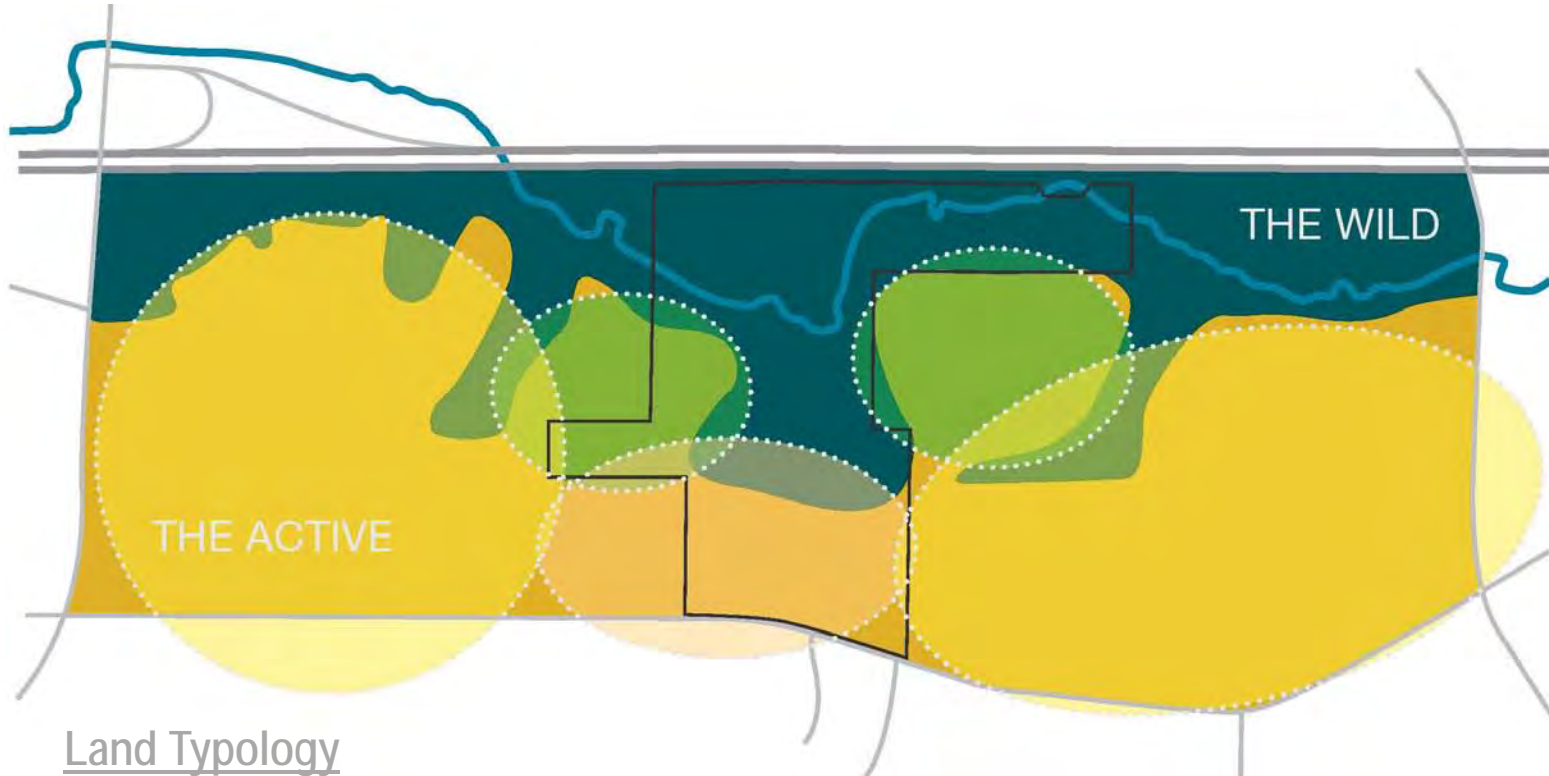
Data Sources:
 NAIP 2010; StreetMap USA
 AES Job Number: 11-0323
 Date 6/28/2011
 File Name: forestgrove_base_20110627.mxd



Applied Ecological Services, Inc.
 21938 Mushtown Road
 Prior Lake, MN 55372
 952-447-1919
 www.appliedeco.com







Land Typology

The site provides context based on landscape types including heavily sloped terrain, natural drainage ways, and native vegetation. Two zones can be formed from these land types, THE WILD AND THE ACTIVE

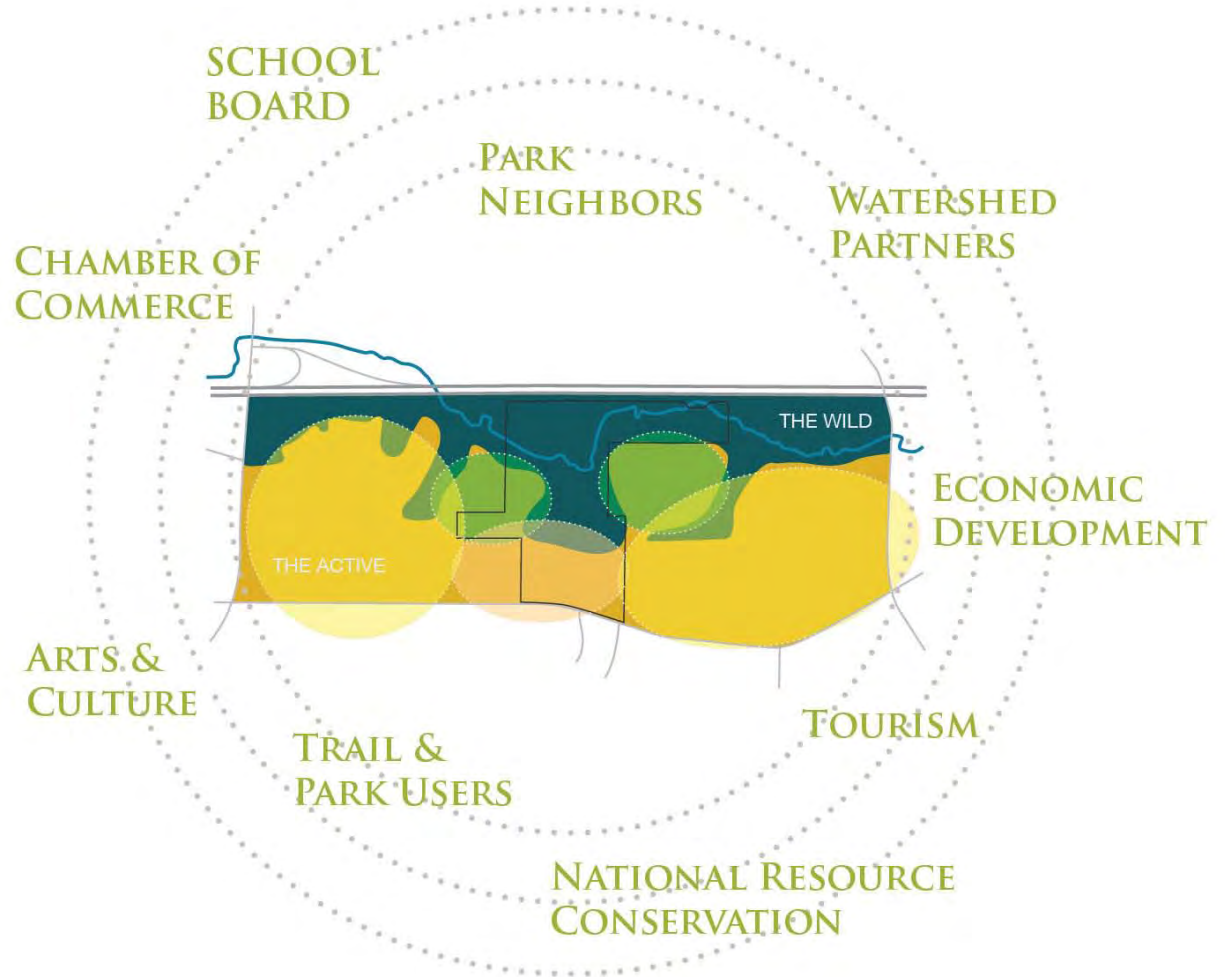
Cultural

14 Focus Group Meetings
2 day Design

3 Public Workshops

5 Steering Committee Meeting

2 Pleasant Valley Meeting



Cultural

Connectivity:

- Connect to the surrounding and larger community.

Campus / Village:

- Let the park and open space serve as a focal point to the surrounding community.

Smart Growth:

- Walkable/Livable/Enjoyable.

Healthy:

- A community that promotes healthy lifestyles.

Environmental

Conservation:

- Safe guard natural environment.

Restoration:

- Restore the remains of the woodland savanna and prairie.
- Restore Spencer Creek shoreline and wetlands.

Water Quality:

- Improve Spencer Creek water quality.

Economic

Quality:

- Develop park land that adds to the value of the surrounding community.

Opportunity:

- Develop facilities that provide opportunity for revenue.

Share Resources

- Develop facilities that serve multiple uses

Sustainable

Quality Green

Conservation Healthy

Quality

Seamless

Home Village/Camp

Community

Front Door

Safe

Connected

Share Resources

Four Seasons

WOW Factor

Regional Attractions

THE SUSTAINABLE SITES INITIATIVE™

Prerequisites and Credits Categories:

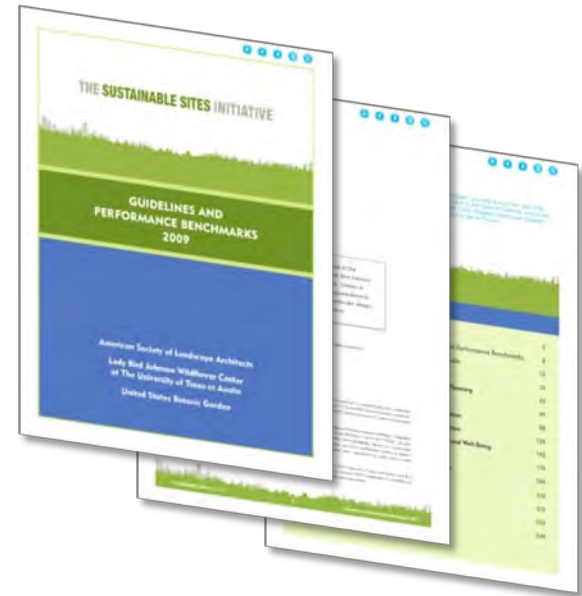
1. Site Selection
2. Pre-Design Assessment and Planning
3. Site Design—Water
4. Site Design—Soil and Vegetation
5. Site Design—Materials Selection
6. Site Design—Human Health and Well-Being
7. Construction
8. Operations and Maintenance
9. Monitoring and Innovation

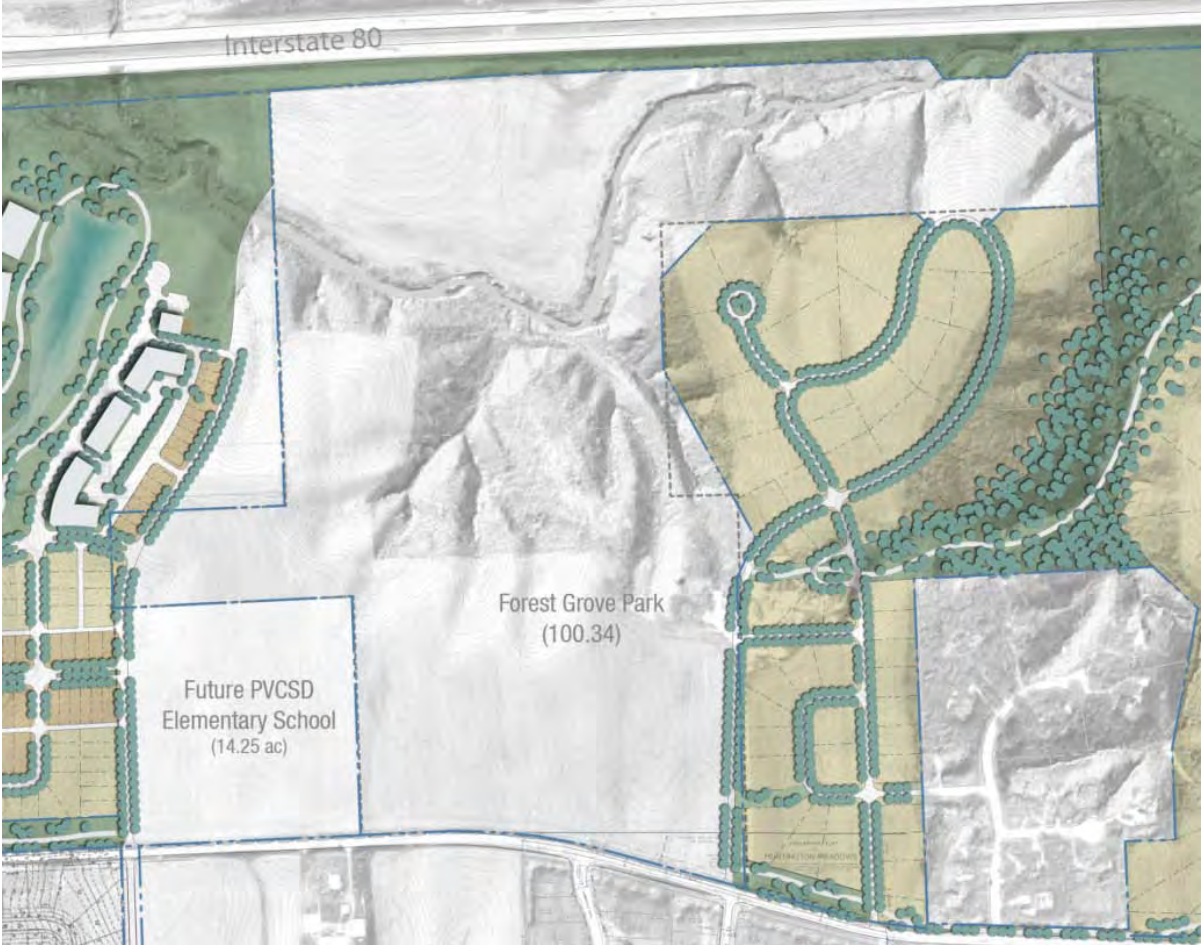


AMERICAN SOCIETY OF
LANDSCAPE ARCHITECTS
ASLA Library & Education
Advocacy Fund

Lady Bird Johnson
Wildflower Center
A PARTNERSHIP OF THE TEXAS A&M SYSTEM

UNITED STATES
BOTANIC GARDEN





Forest Grove



a place to live, work and play

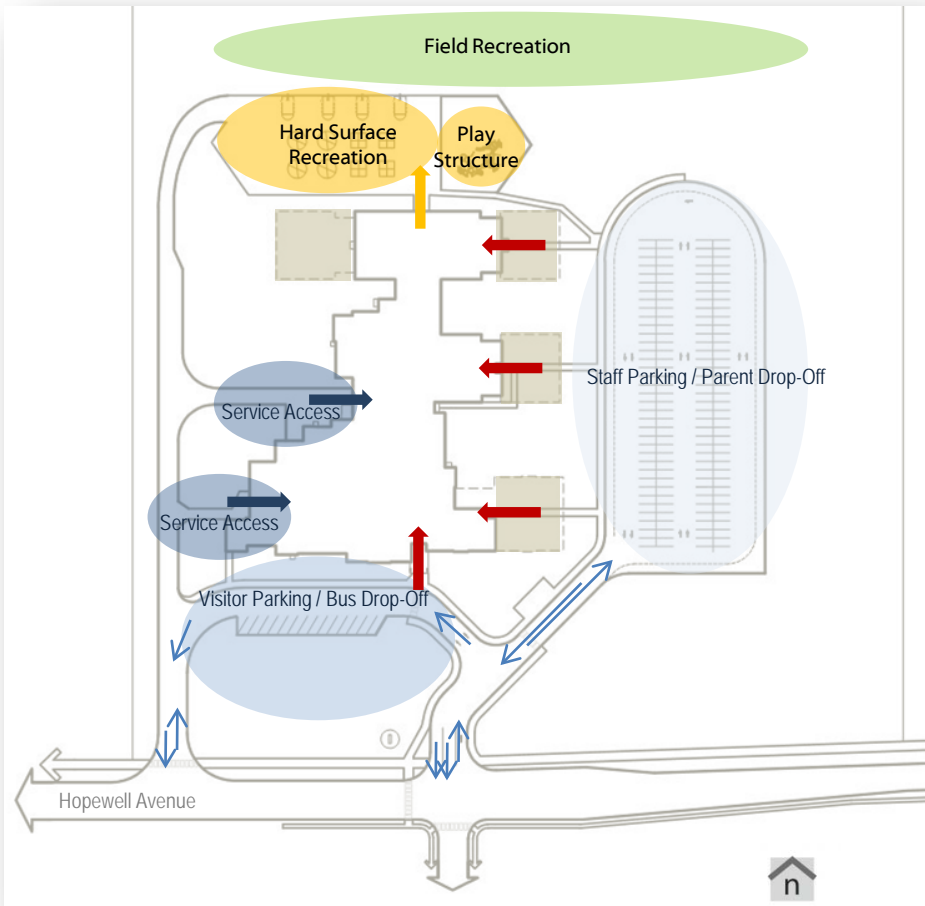
City of Bettendorf

February 21, 2012

LAND USE CONCEPT PLAN



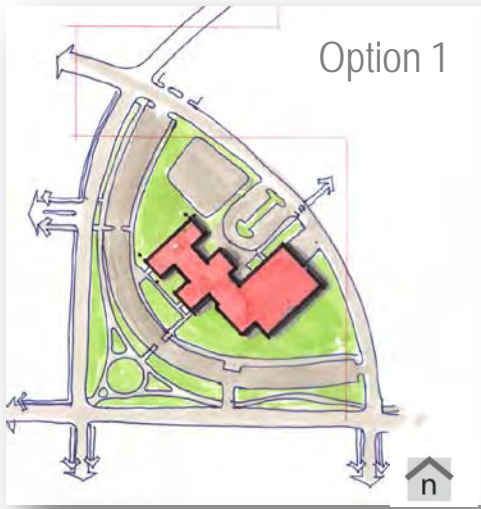
RDg
PLANNING • DESIGN



Hopewell Elementary School

- Surrounding Land Use
 - Context
 - Neighbors, Visibility, Access, Connectivity, Others
- Building
 - Existing Building (60,000 SF)
 - Future Addition (21,100 SF)
 - Entrance /Egress
 - Service
 - Public - Events
- Circulation
 - Vehicular
 - Staff Parking (124 Stalls) / Parent Drop-Off (475LF Pickup (23 Cars))
 - Visitor Parking 12 Stalls) / Bus - Pick Up, Drop Off (??)
 - Service
- Recreation
 - Hard – Courts
 - Hard Surface Multi-Use (23,273 SF (½ Acre))
 - Playground (7623 SF)
 - Soft -Field (9.5 Acres)
 - Soccer Goals
 - Open Flex Lawn

Option 1



Option 2



Option 3



Option 4



Forest Grove Elementary School

- Safety
- Accessibility
- Economy
- Future Expansion
- Visibility / Experience
- Outdoor Recreation
- Other

Option 5





Forest Grove Elementary School

- Safety
- Accessibility
- Economy
- Future Expansion
- + • Visibility / Experience
- Outdoor Recreation
- Other

Chapter 3: **Plan Alternatives**

Program Development
Plan Development

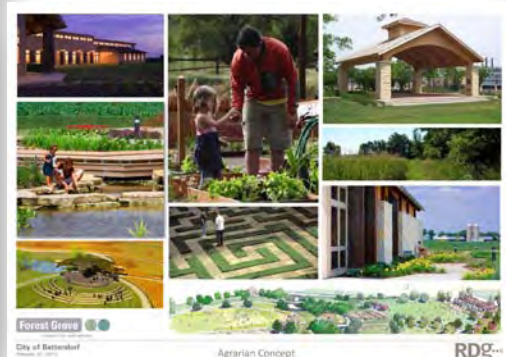
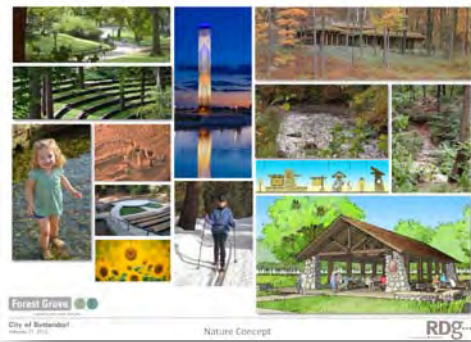




ACTIVE CONCEPT



NATURE CONCEPT



AGRARIAN CONCEPT

PRELIMINARY MASTER PLAN



- 1 Miracle Field
- 2 Trailhead - Shelter
- 3 Playground
- 4 Elementary School (Proposed)
- 5 Lodge (9,600 – 10,500 square feet)
- 6 Shelter
- 7 Large Amphitheater (800 – 1,200 people)
- 8 Small Amphitheater / Classroom
- 9 Parking
- 10 Trail
- 11 Open Space
- 12 Established Wetland
- 13 Restored Woodland
- 14 Spencer Creek
- 15 Preserved Prairie
- 16 Adventure Course
- 17 Prairie Maze

0 150' 300' 600'



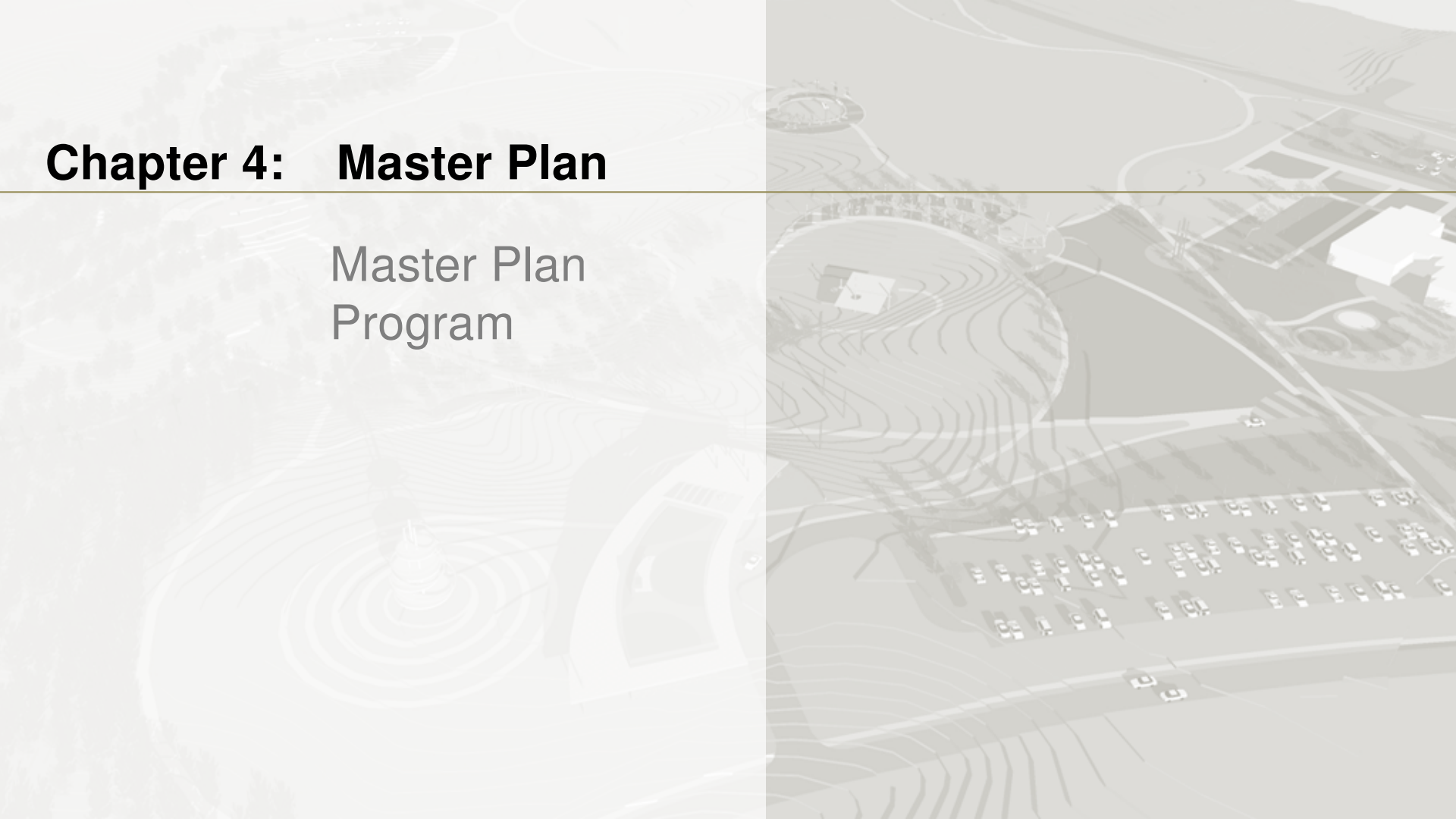
Forest Grove

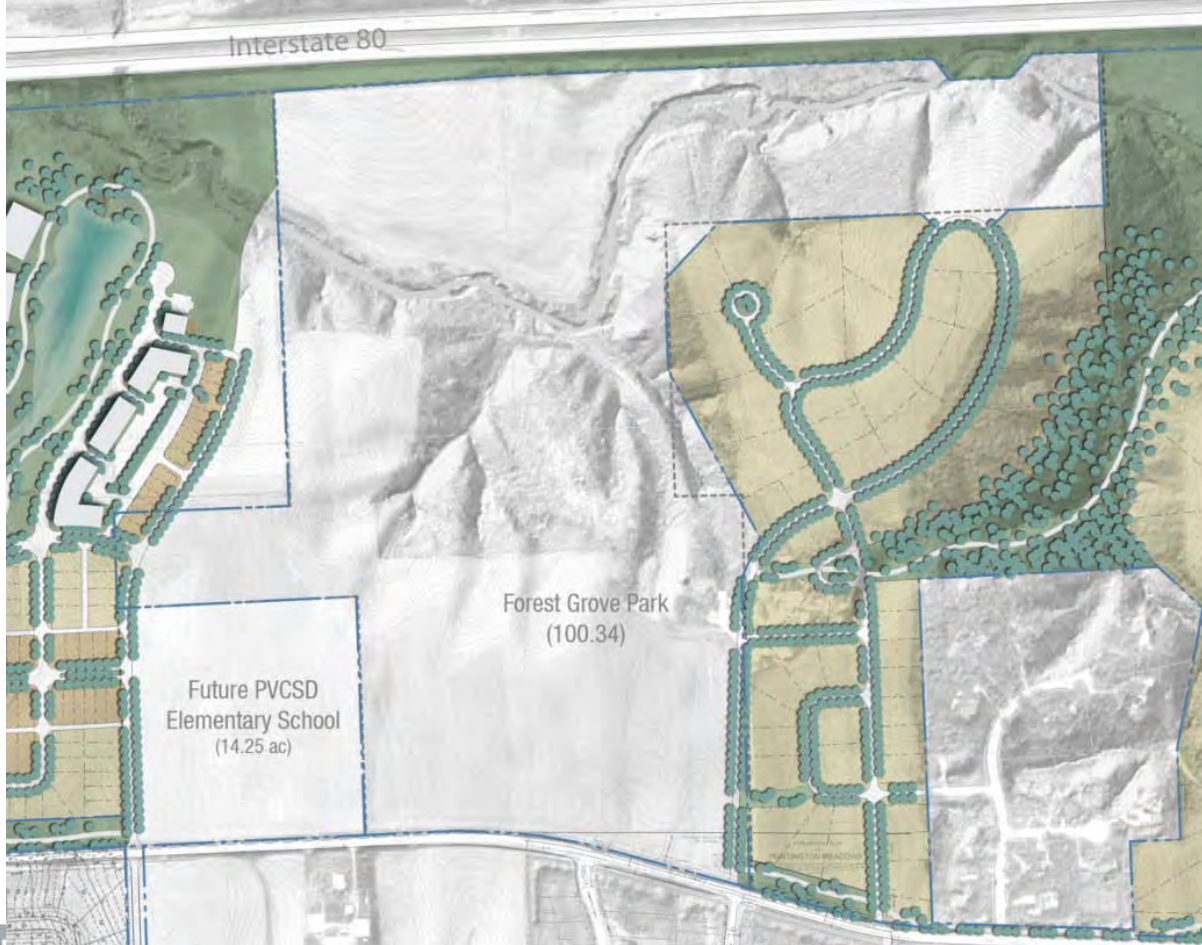
a place to live, work and play

City of Bettendorf
February 21, 2012

Chapter 4: Master Plan

Master Plan Program



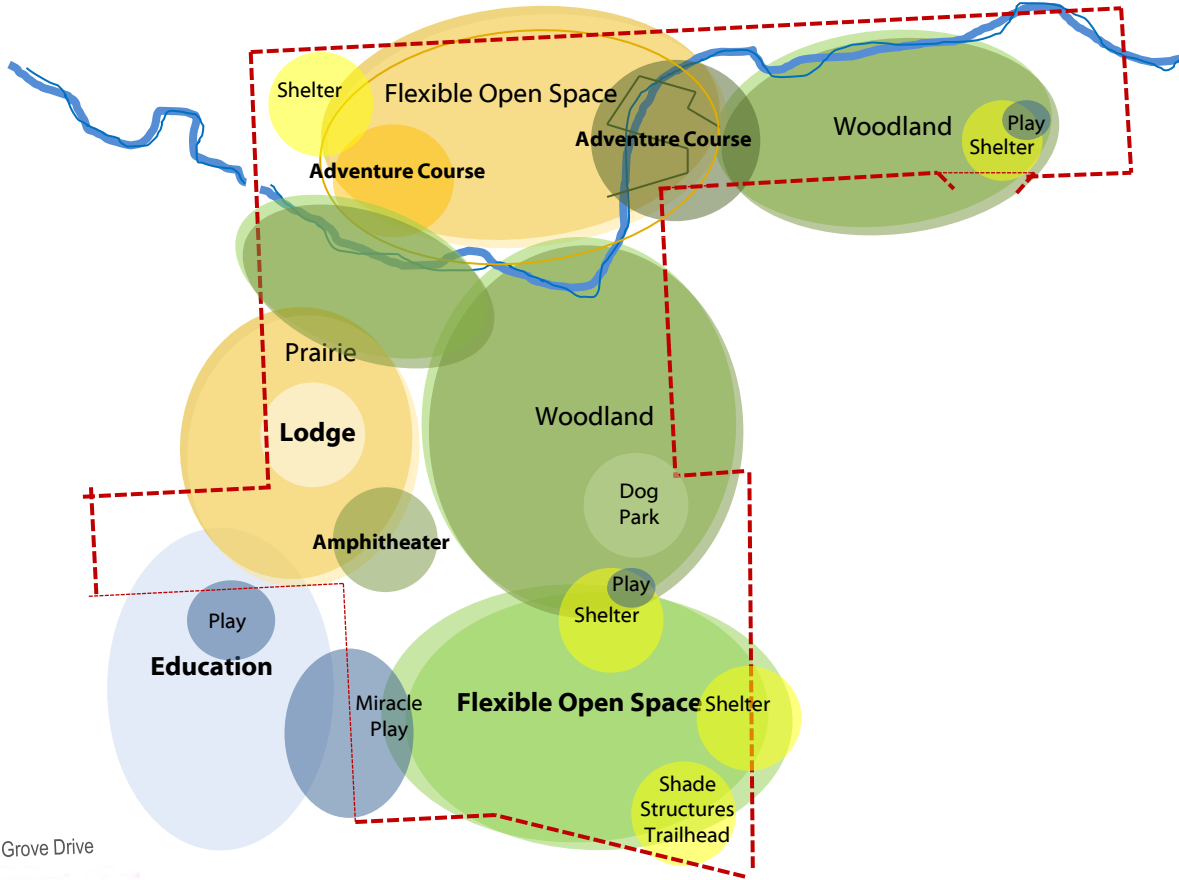


Forest Grove

a place to live, work and play



I-80



*PRELIMINARY
MASTER PLAN*

Park Zoning

Forest Grove Drive



City of Bettendorf
February 21, 2012

0 150' 300' 600'



PRELIMINARY MASTER PLAN

- 1 Miracle Field
- 2 Trailhead - Shelter
- 3 Playground
- 4 Elementary School (Proposed)
- 5 Lodge (9,600 – 10,500 square feet)
- 6 Shelter
- 7 Large Amphitheater (800 – 1,200 people)
- 8 Small Amphitheater / Classroom
- 9 Parking
- 10 Trail
- 11 Open Space
- 12 Established Wetland
- 13 Restored Woodland
- 14 Spencer Creek
- 15 Preserved Prairie
- 16 Adventure Course
- 17 Prairie Maze

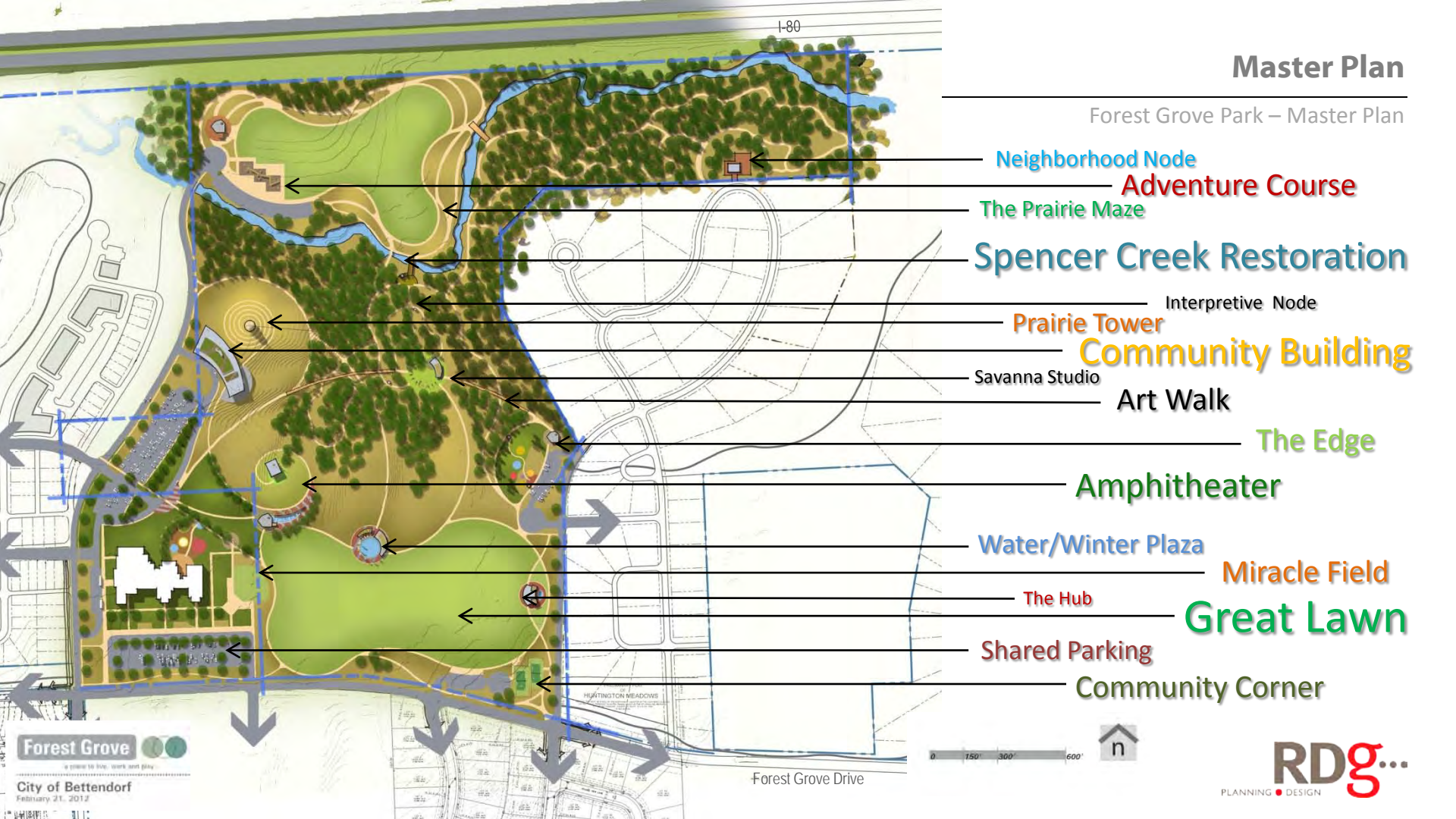
0 150' 300' 600'



PRELIMINARY PLAN
HUNTINGTON MEADOWS

Master Plan

Forest Grove Park – Master Plan

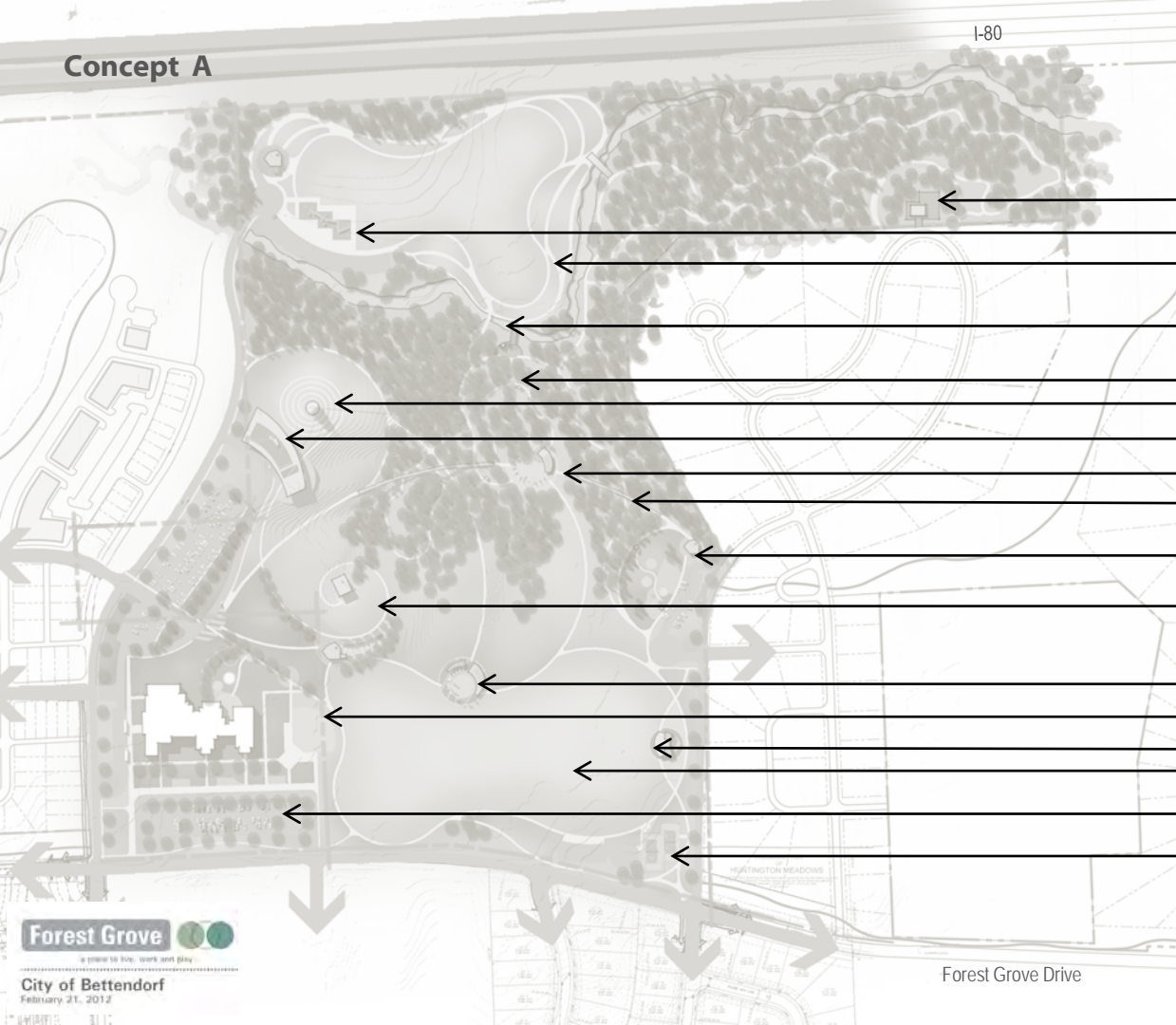


- Neighborhood Node
- Adventure Course
- The Prairie Maze
- Spencer Creek Restoration
- Interpretive Node
- Prairie Tower
- Community Building
- Savanna Studio
- Art Walk
- The Edge
- Amphitheater
- Water/Winter Plaza
- Miracle Field
- The Hub
- Great Lawn
- Shared Parking
- Community Corner

Forest Grove
a place to stop, work and play
City of Bettendorf
February 21, 2012



RDg...
PLANNING • DESIGN



Nighborhood Node

Adventure Course

The Prairie Maze

Spencer Creek Restoration

Interpretive Node

Prairie Tower

Community Building

Savanna Studio

Art Walk

The Edge

Amphitheater

Water/Winter Plaza

Miracle Field

The Hub

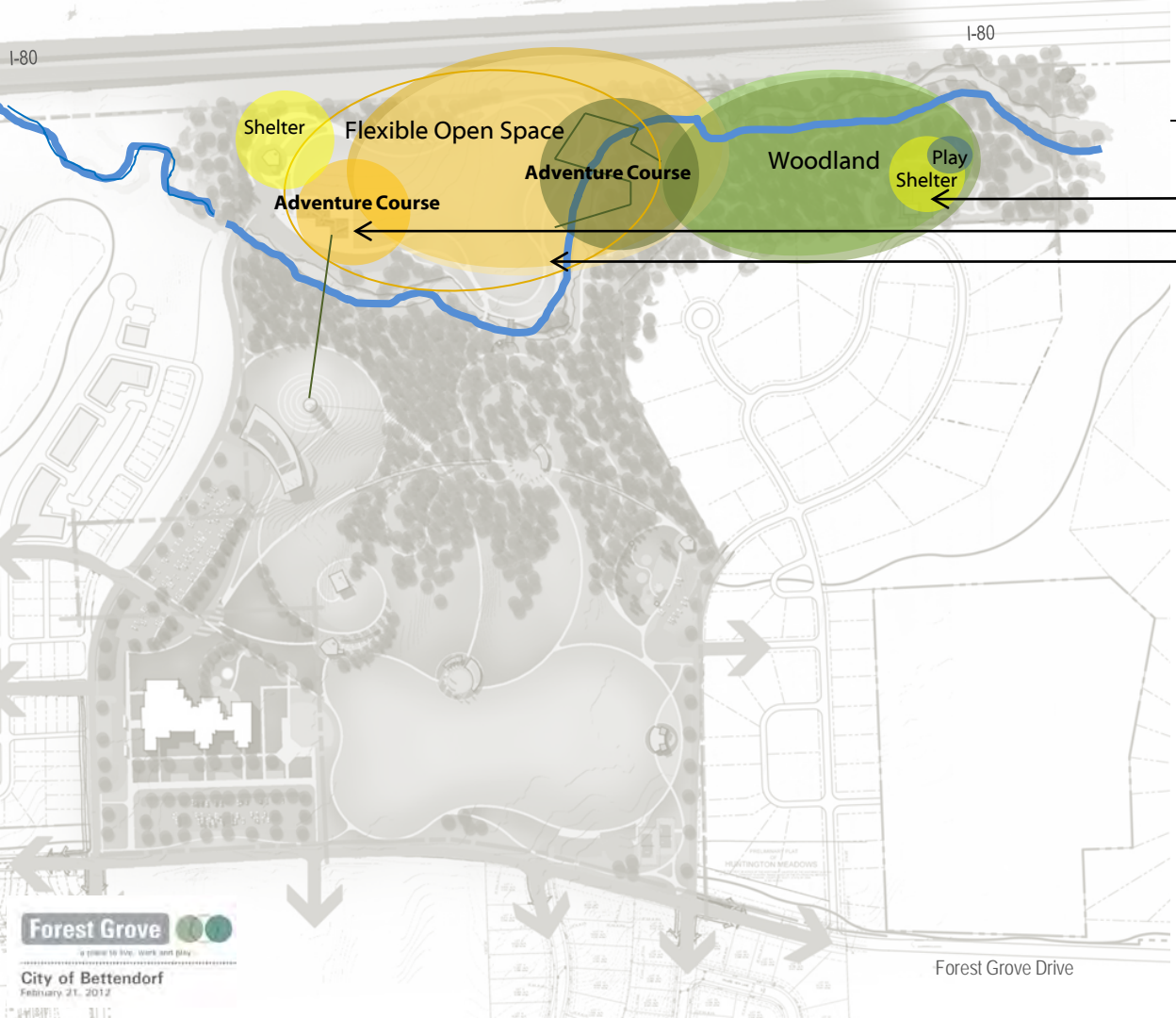
Great Lawn

Shared Parking

Community Corner

Master Plan

Forest Grove Park – Master Plan



Neighborhood Node

Adventure Course

The Prairie Maze







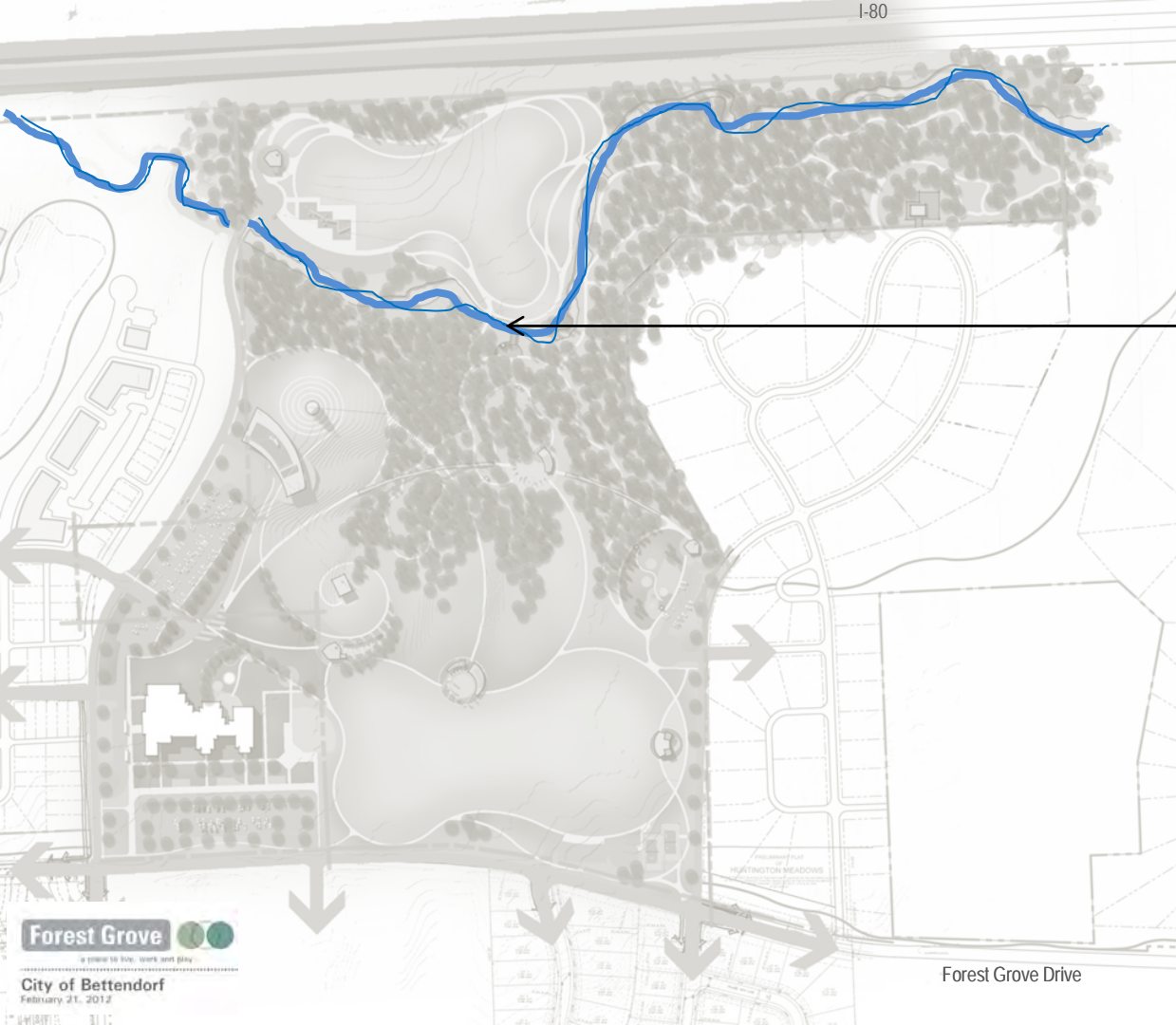




Master Plan

Forest Grove Park – Master Plan

Spencer Creek Restoration



Forest Grove 

a place to live, work and play

City of Bettendorf

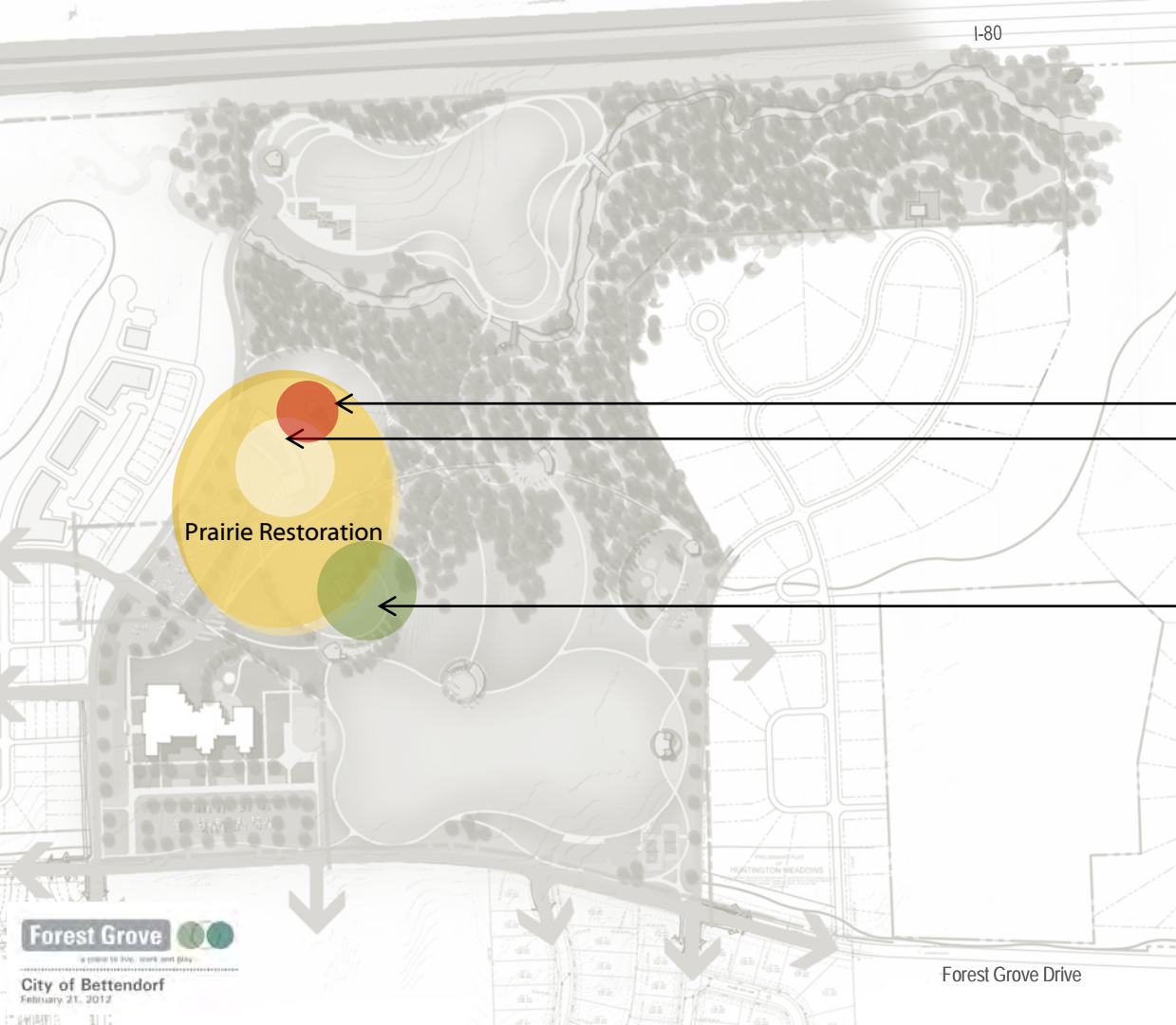
February 21, 2012

Forest Grove Drive



Master Plan

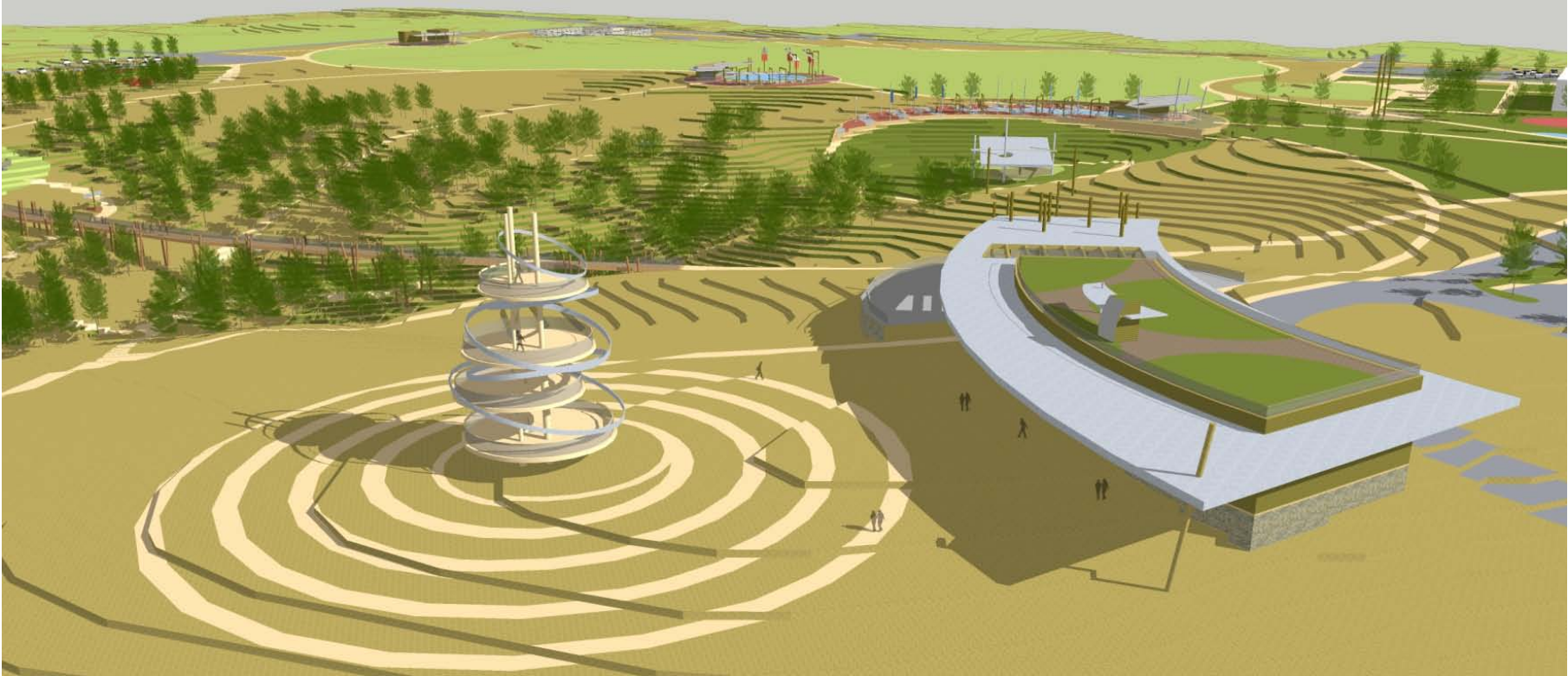
Forest Grove Park – Master Plan



Prairie Tower
Community Building

Amphitheater

Prairie Restoration

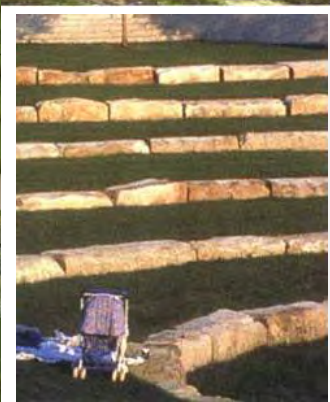


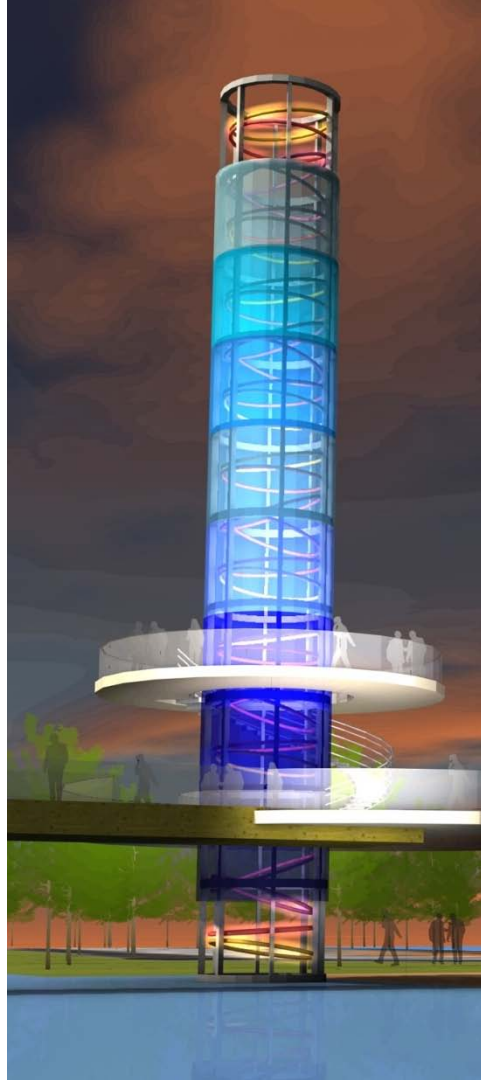
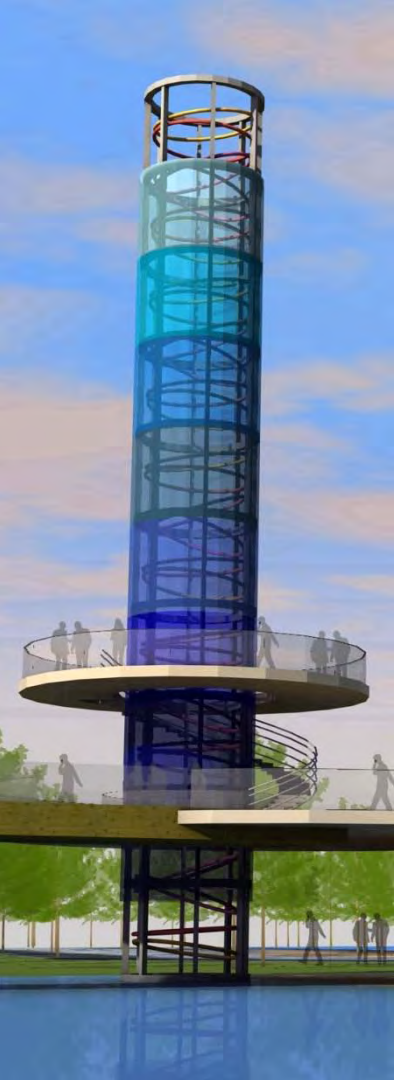


lan







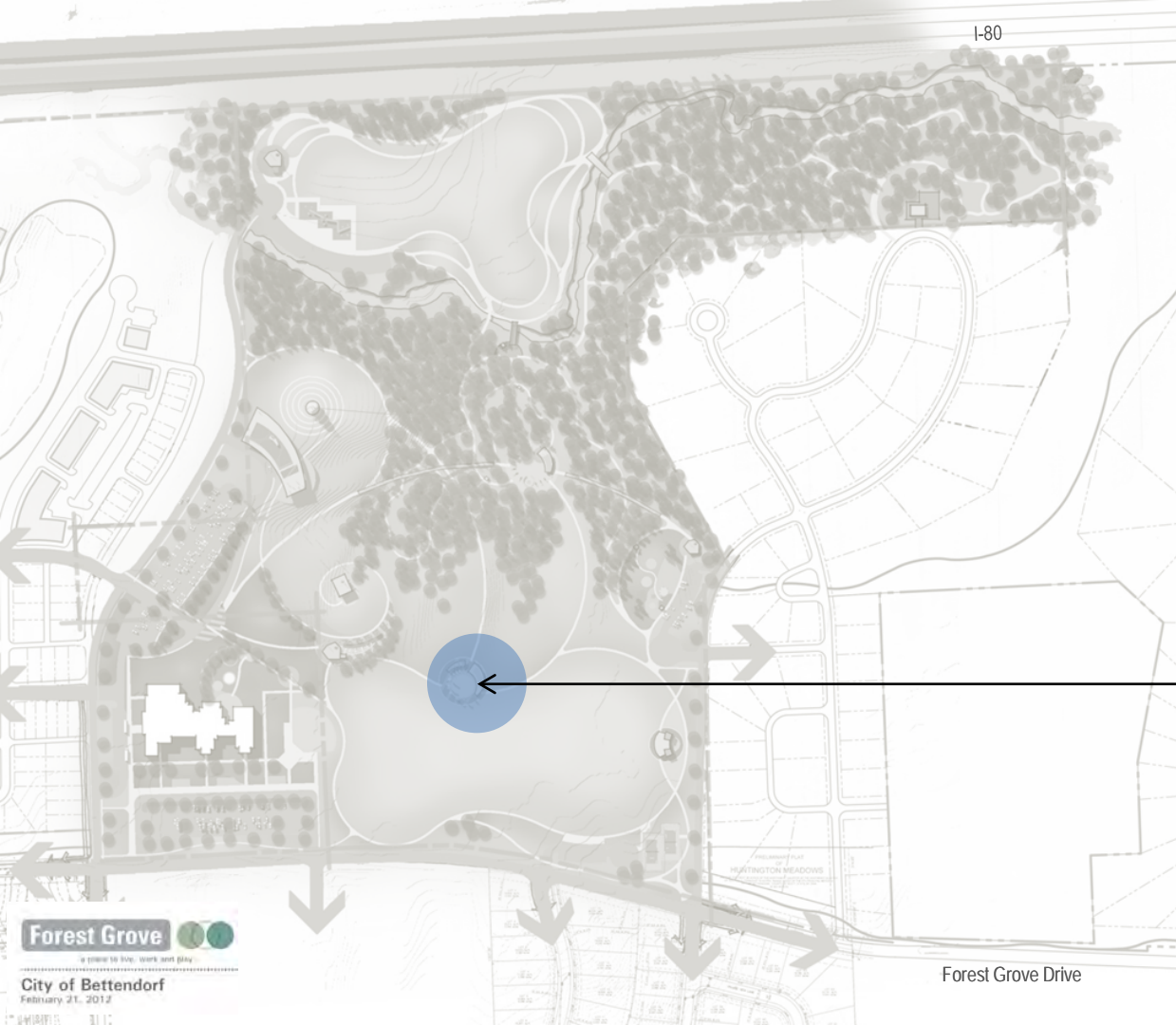


Park Architecture



Master Plan

Forest Grove Park – Master Plan



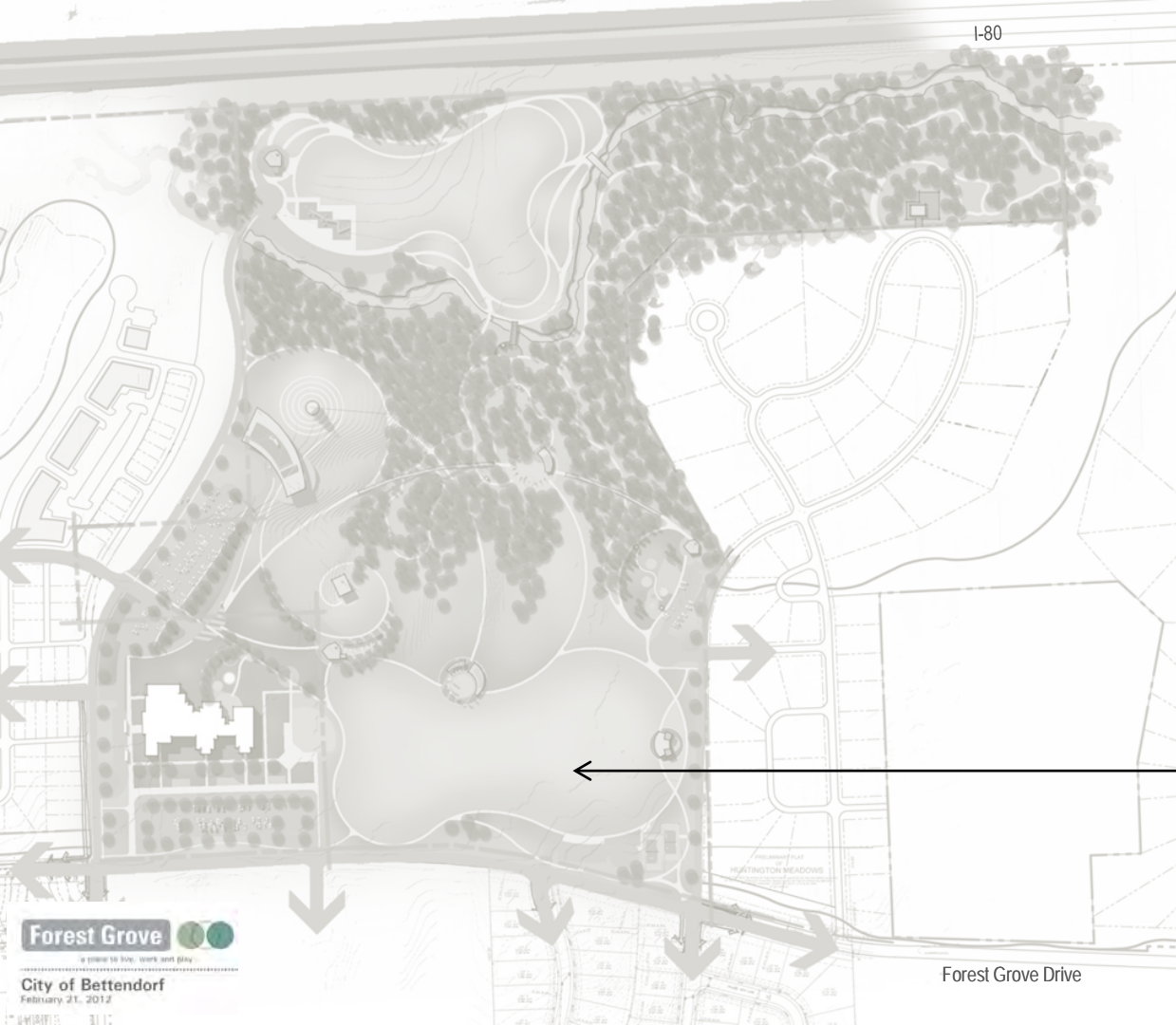
Water/Winter Plaza

Forest Grove Drive



Master Plan

Forest Grove Park – Master Plan



Great Lawn

Forest Grove
a place to live, work and play
City of Bettendorf
February 21, 2012

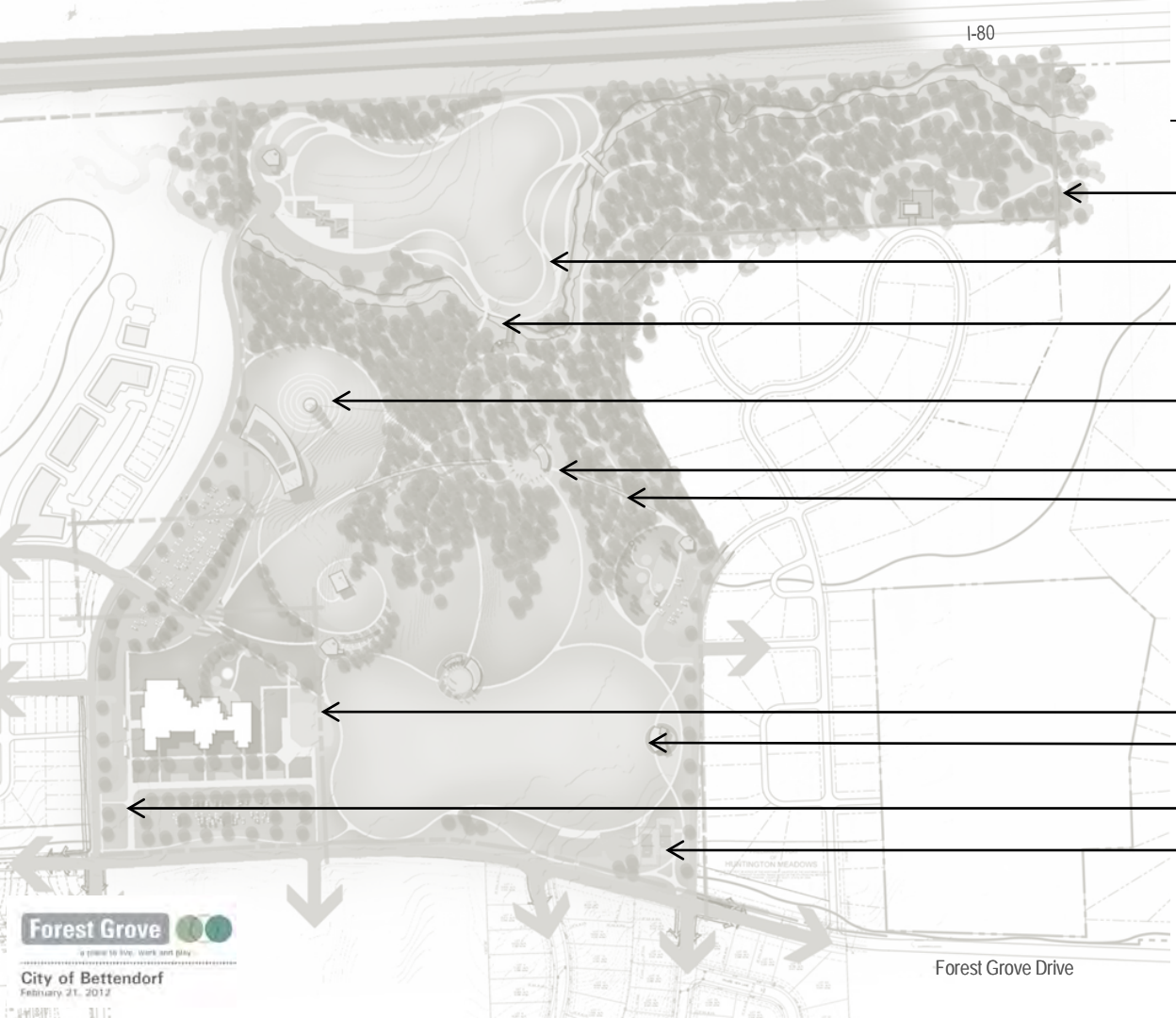
Forest Grove Drive

RDg...
PLANNING • DESIGN



Master Plan

Forest Grove Park – Master Plan



Nature Trail

The Prairie Trail

Spencer Creek Restoration

Prairie Trail

Nature Trail

Art Walk

Recreational Trail

Recreational Trail

Enhanced Pedestrian Crossing

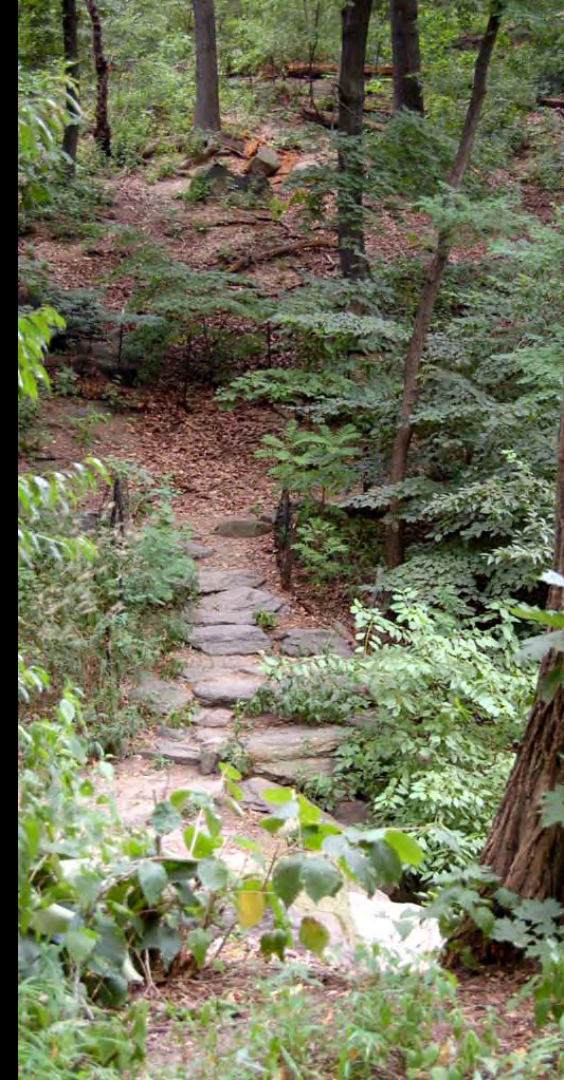
Trail head

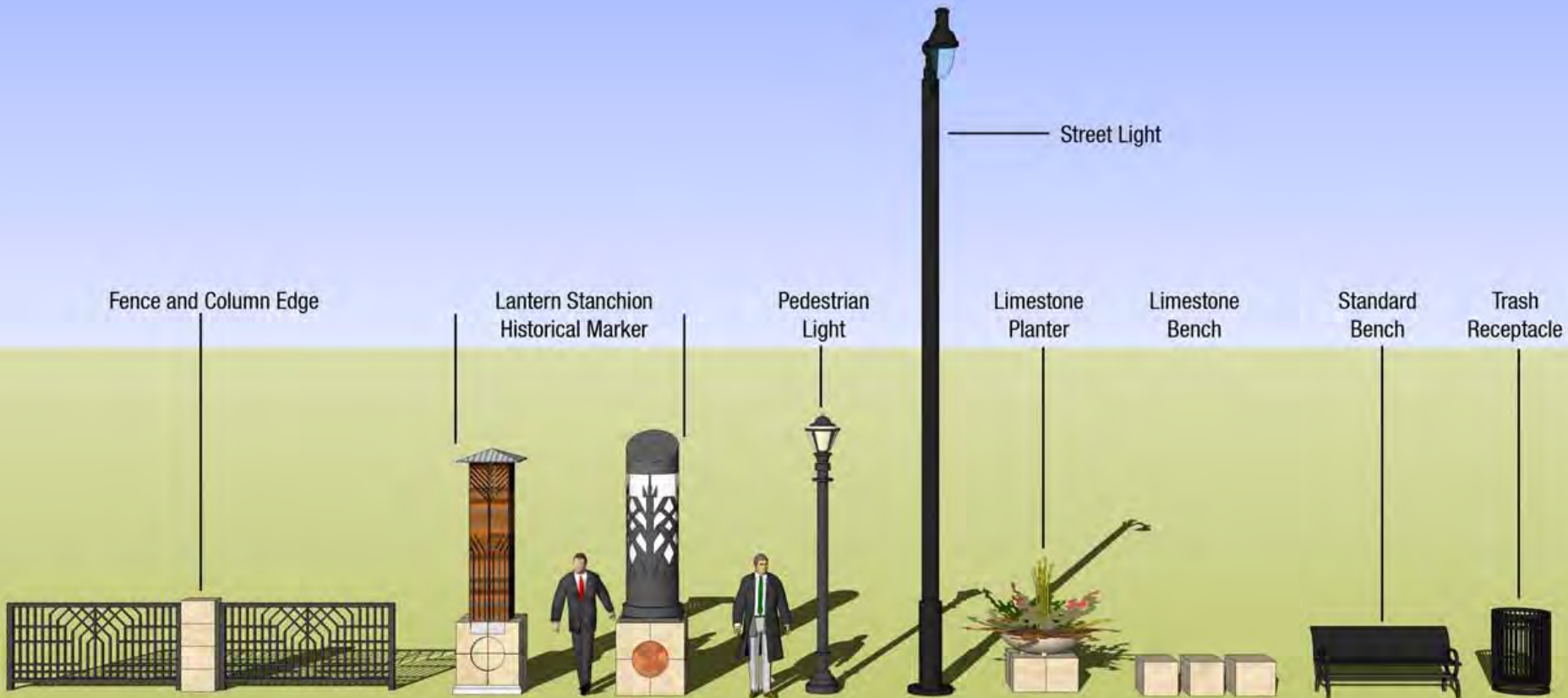
Forest Grove
a place to live, work and play

City of Bettendorf
February 21, 2012

Forest Grove Drive

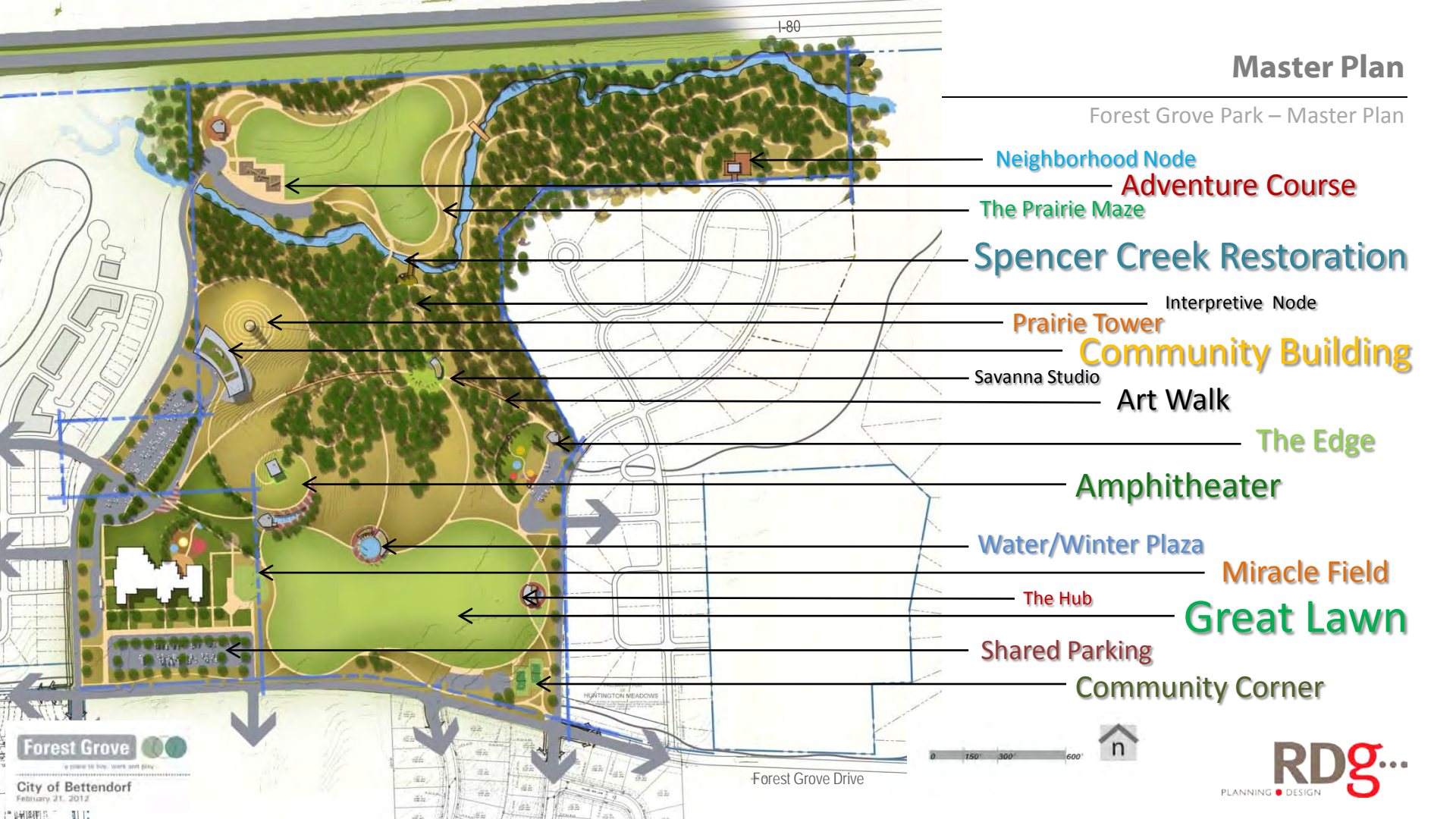
RDg...
PLANNING • DESIGN





Master Plan

Forest Grove Park – Master Plan



Neighborhood Node
Adventure Course

The Prairie Maze

Spencer Creek Restoration

Interpretive Node

Prairie Tower

Community Building

Savanna Studio

Art Walk

The Edge

Amphitheater

Water/Winter Plaza

Miracle Field

The Hub

Great Lawn

Shared Parking

Community Corner

Forest Grove
a place to stop, work and play
City of Bettendorf
February 21, 2012

0 150' 300' 600'



Forest Grove Drive

RDg...
PLANNING • DESIGN

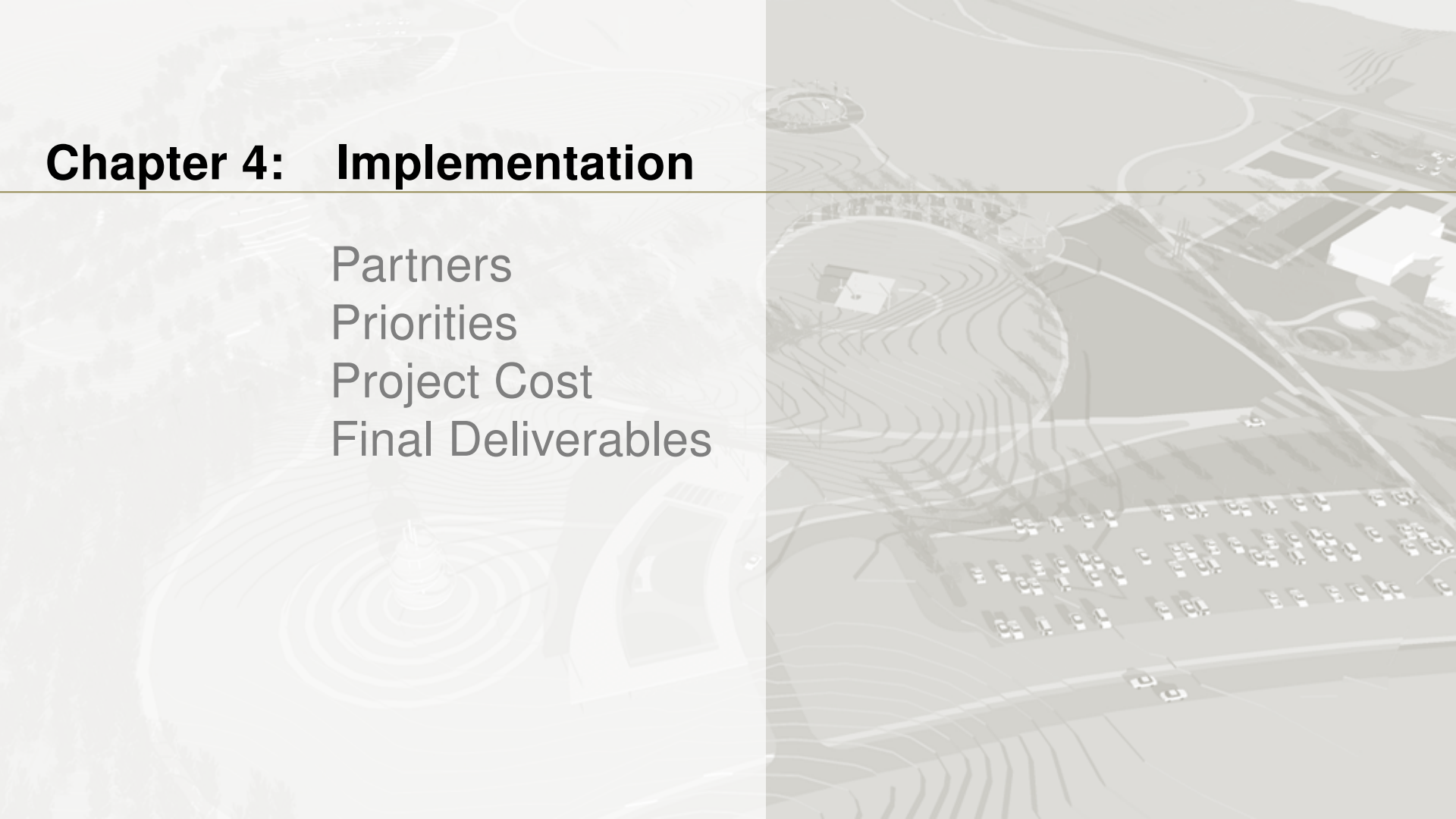
Chapter 4: Implementation

Partners

Priorities

Project Cost

Final Deliverables



Funding Partners



Funding Sources

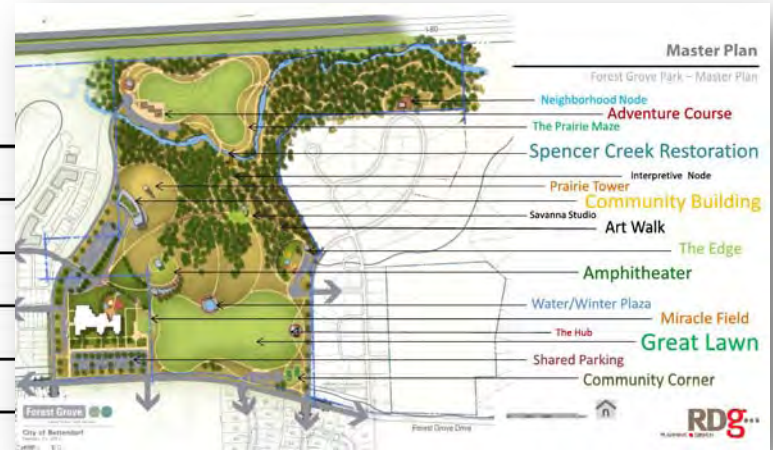
	Local				County/Region				State				National				Private						
	City of Bettendorf	QC Convention & Visitor's Bureau	Public Art Foundation (Quad City Arts)	Bettendorf Rotary / Lions / Kiwanis	NRCS	Scott County	Gaming	Outdoor Adventure	CAT/Vision Iowa	REAP	Iowa Department of Transportation	Iowa Department of Natural Resources	Iowa Department of Tourism (IDEA)	Iowa Soybean Association	US Fish & Wildlife	NEA (Our Town)	NRPA	NPS – Active Trails Program	LAW/CON	Private Foundation	Industry – John Deere, Bass Pro	PF/Ducks/IKES	Trees Forever
Miracle Field	✓	✓		✓			✓		✓										✓		✓		
Art Walk	✓	✓	✓						✓	✓					✓			✓	✓				
Adventure Course	✓	✓							✓	✓		✓						✓	✓				
Water Winter Plaza	✓	✓							✓	✓								✓	✓	✓			
Community Building (Lodge)	✓	✓		✓					✓	✓			✓					✓	✓			✓	
Ecological Restoration	✓	✓							✓	✓		✓	✓	✓				✓	✓				
The Great Lawn	✓	✓		✓					✓			✓						✓	✓				
Pathways & Boardwalks	✓	✓			✓				✓			✓	✓	✓				✓				✓	✓
The Edge, Community Corner, Neighborhood Node, and Hub	✓	✓							✓	✓								✓					✓
Park Amenities	✓	✓							✓	✓								✓	✓				
Gray Infrastructure	✓								✓														
Prairie Tower	✓				✓				✓		✓		✓	✓								✓	✓

*This graph has been created for illustration purposes only

- ✓ High Magnitude / Priority
- ✓ Medium Magnitude / Priority
- ✓ Low Magnitude / Priority

Implementation Priorities

High	Medium	Low	Cost	Projects
■			\$ xxx,xxx	Miracle Field
	■		\$ xxx,xxx	Art Walk
		■	\$ xxx,xxx	Adventure Course
■			\$ xxx,xxx	Water Winter Plaza
	■		\$ xxx,xxx	Community Building (Lodge)
		■	\$ xxx,xxx	Ecological Restoration
■			\$ xxx,xxx	The Great Lawn
	■		\$ xxx,xxx	Pathways & Boardwalks
		■	\$ xxx,xxx	The Edge, Community Corner, Neighborhood Node, and Hub
■			\$ xxx,xxx	Park Amenities
	■		\$ xxx,xxx	Gray Infrastructure
		■	\$ xxx,xxx	Prairie Tower



*This graph has been created for illustration purposes only





AMPHITHEATER AND SUMMER PLAZA DURING AN EVENT

A Case for a Better Way of Community Building

The 2005 UN World Urbanization Prospects report projected that the urban growth is likely to rise to 60% (4.9 billion) by 2030. Healthy Urbanism is a place we could live, work, learn and play and is a powerful case for the types of patterns we can promote:

- Increasing sustainability through appropriate density.
- Integrating transportation and land use.
- Creating sustainable neighborhoods, including housing, car-free areas, locally-owned stores, walkable neighborhoods, and universal accessibility.
- The health and environmental benefits of linking humans to nature, including walk-to open spaces, neighborhood stormwater systems and waste-treatment, and food production.
- High performance buildings and energy systems.

A HEALTHY WAY OF LIVING

"Designing Healthy Communities." - looks at the impact our built environment has on key public health indices - obesity, diabetes, heart disease, asthma, cancer and depression. Dr. Jackson connects bad community design with burgeoning health costs, then analyzes and illustrates what citizens are doing about this urgent crisis by looking upstream for innovative solutions.



WINTER PLAZA



SAVANNA STUDIO



PRAIRIE TOWER & COMMUNITY BUILDING



GREAT LAWN



SPENCER CREEK RESTORATION

more

